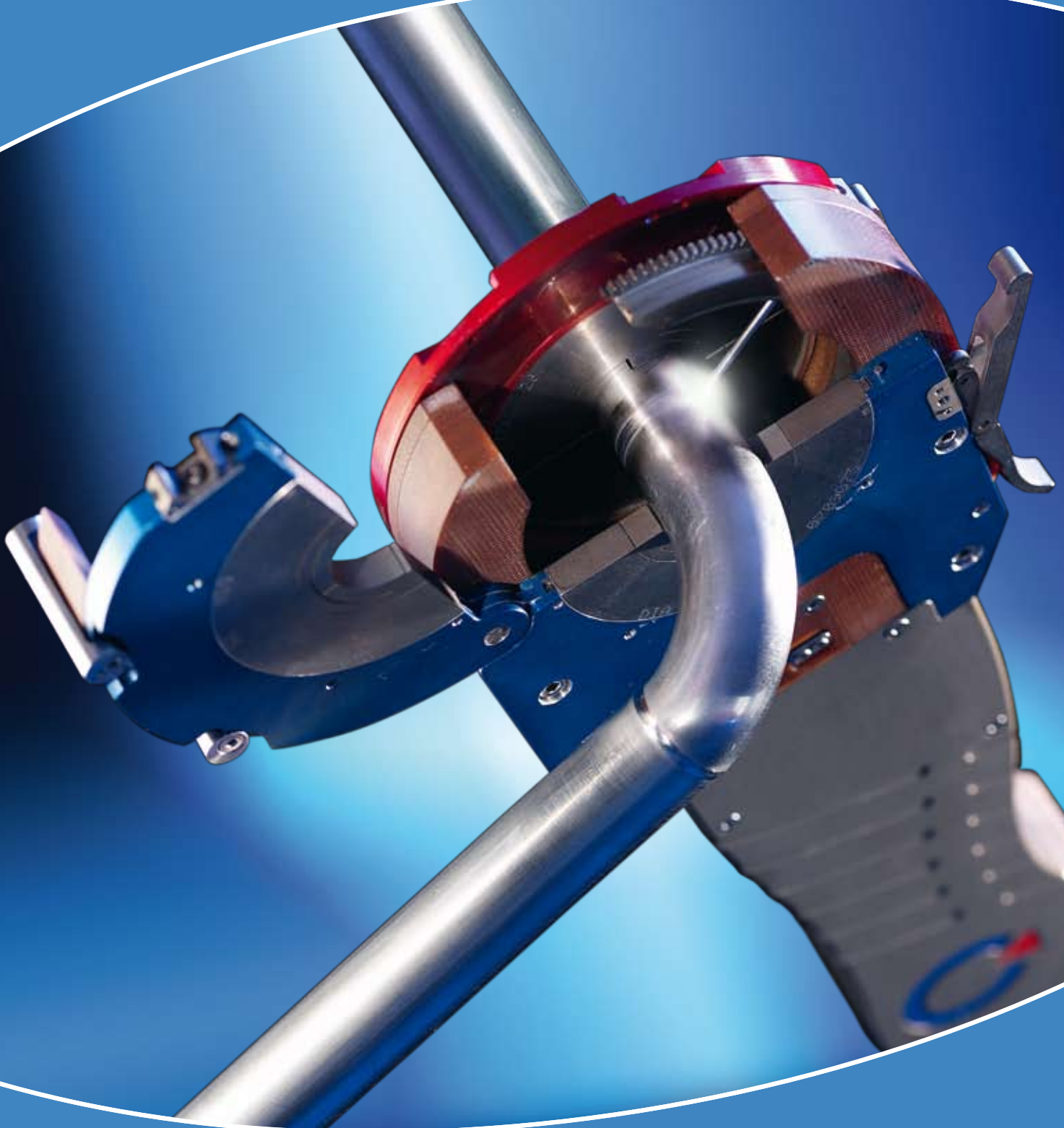




TIG - Without Filler Wire

Closed Chamber Welding Head

for welding of tube to tube joints





Closed Chamber Welding Head

for welding of tube to tube joints

Easy to use, highest quality and productivity

General Characteristics

Advantages

- ▶ Oxidation-free welds
- ▶ Optimised ergonomics, easy to use
- ▶ Respecting international standards and norms (EHEDG, ASME, FDA...)
- ▶ Compatible with all Polysoude™ Power Sources

Resulting from 50 years' experience in mastering welding technologies

Reversible hook for an enlarged range of clamping tolerances

Interchangeable flexible titanium Tube Clamp Inserts – TCI's™. Comply with standard tube O.D. sizes and tolerances, for hygienic and high purity requirements

Narrow welding head profile for use in areas with constrained axial and radial clearance

Closed loop regulation to ensure precise, constant or pulsed welding speed

Return-to-home feature: the electrode gear automatically returns to its loading position

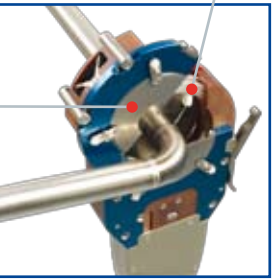
Particularly designed for high duty cycle applications by means of high temperature resistant materials and closed loop water cooling

Encoder for position based control of the welding program

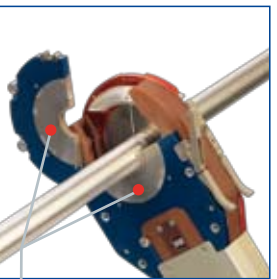
Remote control

Single sided tube clamp

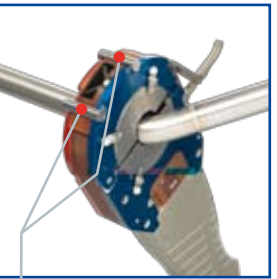
Off-set electrode holder



Elbow kit



Flexible Titanium Tube Clamp Inserts - TCI's™



Reinforcement bars



Integrated remote control

Associated Power Sources



▶ PS 164-2

160 A, "all inclusive", portable, single-phase power supply



▶ P4

170 A, "modular", portable, programming by PC or touch screen, single-phase power supply

The Complete Range



MW 40

MW 65

MW 115

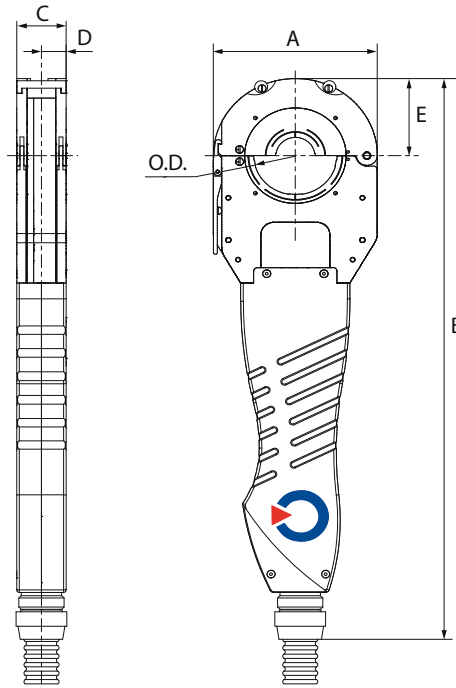
MW 170

Technical Specifications

Type	Tube O.D. in mm / inches		Dimensions in mm					Net weight in kg
	from	to	A	B	C	D	E	
MW 40	6	40	100	430	38	19	50	6
MW 65	12	65	126	458	38	19	63	7
MW 115	25	115	200	547	46	23	100	9
MW 170	80	170	290	580	63	31,5	145	18

Type	Electrode off-set					
	1 – 5 mm		2 – 11 mm		3 – 5 mm	
	Max. tube O.D. in mm / inches					
MW 40	33,7 mm	1 - 5/16"	19,05 mm	3/4"	/	/
MW 65	60,3 mm	2 - 3/8"	42,4 mm	1 - 21/32"	/	/
MW 115	114,3 mm	4 - 1/2"	101,6 mm	4"	/	/
MW 170	/	/	/	/	168,3 mm	6- 5/8"

Cable length: 5,5 m



Options and Accessories

- Titanium Tube Clamp Inserts – TCI's™ for all tube and pipe O.D.s, available both in metric and imperial sizes
- Elbow-kit with off-set electrode holder, single sided tube clamping and gas seal, designed for fittings or components with short stick-out
- Extension cable (15 m)
- Dual welding head switch box
- Compact brief-case for transport and storage
- Tungsten electrodes, pre-sharpened and pre-cut

 Adapting to all your applications!



"Learning to use the equipment took me less than one day of training."

POLYSOUDE : Related Services

► Guidance and technical support

A welding application specialist in your area will advise you on the welding process and appropriate equipment for your application.

► Commissioning / Training

A complete training program will enable you to start using the equipment immediately and in the best way possible.

► Maintenance / Repair

Maintenance and repair operations can be carried out at the Polysoude plant as well as on site by our service network.

► Rental service

Increase the flexibility of your production! A large range of equipment is available for rental from our hire fleet.

Your partners worldwide

AUSTRALIA

POLYSOUDE S.A.S.
☎ +33 (0) 2 40 68 11 00
info@polysoude.com

AUSTRIA

POLYSOUDE AUSTRIA GmbH
☎ +43 (0) 3613 200 36
austria@polysoude.at

BELGIUM

POLYSOUDE BENELUX
☎ +31 (0) 653 84 23 36
k.meurs@polysoude.com

POLYSOUDE BENELUX (SERVICE)

☎ +31 (0) 653 38 85 58
h.milder@polysoude.com

BRAZIL

AJADE COMÉRCIO INSTALAÇÕES E SERVIÇOS Ltda.
☎ +55 (0) 11 45 24 38 98
fernando@ajade.com.br

BULGARIA

KARWELD FOOD
☎ +359 (0) 29 73 32 15
Karweld@bg400.bg

CANADA

MAG TOOL Inc.
EDMONTON - ALBERTA
☎ 800 661 9983
magtool@magtool.com

MAG TOOL Inc.

CAMBRIDGE - ONTARIO
☎ +1 519 651 10 50
michael@magtool.com

CHINA

POLYSOUDE SHANGHAI CO. Ltd
☎ +86 (0) 21 64 09 78 26
j.zhang@polysoude.cn

CROATIA

EUROARC D.O.O.
☎ +385 (0) 1 2 40 60 77
euroarc@euroarc.hr

CZECH REPUBLIC

POLYSOUDE CZ
☎ +420 602 60 28 55
m.matousek@polysoude.cz

DENMARK

POLYSOUDE DENMARK
☎ +45 (0) 32 94 85 10
orbital@polysoude.dk

EGYPT

POLYSOUDE UK
☎ +44 (0) 1942 820 935
info@polysoude.com

ESTONIA

POLYSOUDE S.A.S.
☎ +33 (0) 2 40 68 11 00
info@polysoude.com

FINLAND

SUOMEN TEKNOHAUS OY
☎ +358 (0) 927 47 2 10
info@teknohaus.fi

FRANCE

POLYSOUDE S.A.S.
☎ +33 (0) 2 40 68 11 00
info@polysoude.com

GERMANY

POLYSOUDE DEUTSCHLAND KORNWESTHEIM
☎ +49 (0) 7154 1796 90
info@polysoude.com

POLYSOUDE DEUTSCHLAND LEVERKUSEN / OPLADEN

☎ +49 (0) 7154 1796 90
info@polysoude.com

ITALY

POLYSOUDE ITALIA SRL
☎ +39 (0) 2 93 79 90 94
b.baccegga@polysoude.it

JAPAN

GMT CO Ltd - KAWASAKI
☎ +81 (0) 44 222 6751
gmt@e-gmt.co.jp

GMT CO Ltd - OSAKA

☎ +81 (0) 789 35 6751
gmt.kansai@e-gmt.co.jp

JORDAN

POLYSOUDE UK
☎ +44 (0) 1942 820 935
info@polysoude.com

NEW ZEALAND

POLYSOUDE S.A.S.
☎ +33 (0) 2 40 68 11 00
info@polysoude.com

NORWAY

POLYSOUDE BENELUX
☎ +31 (0) 653 84 23 36
k.meurs@polysoude.com

PAKISTAN

POLYSOUDE S.A.S.
☎ +33 (0) 2 40 68 11 00
info@polysoude.com

PHILIPPINES

POLYSOUDE ASIA
☎ +86 (0) 65 862 60 08
Jmpan@singnet.com.sg

SINGAPORE

POLYSOUDE ASIA
☎ +86 (0) 65 68 62 60 08
Jmpan@singnet.com.sg

SIN SOON HUAT WELDING PRODUCTS PTE. Ltd

☎ +65 (0) 62 65 60 88
wchng@sshcorp.com

SLOVAKIA

CHEMIKO CZ
☎ +420 602 60 28 55
m.matousek@polysoude.cz

SOUTH AFRICA

POLYSOUDE S.A.S.
☎ +33 (0) 2 40 68 11 00
info@polysoude.com

SOUTH KOREA

CHEMIKO CO Ltd
☎ +82 (0) 2 567 5336
chemiko@chol.com

SPAIN

PRAXAIR SOLDADURA S.L.
☎ +34 (0) 91 78 55 77 09
Luis_Alfredo_de_Andres@praxair.com

SWEDEN

POLYSOUDE BENELUX
☎ +31 (0) 653 84 23 36
k.meurs@polysoude.com

SWITZERLAND

POLYSOUDE (SWITZERLAND) Inc.
☎ +41 (0) 43 243 50 80
contact@polysoude.ch

TAIWAN R.O.C.

FIRST ELITE ENT. CO. Ltd
☎ +886 (0) 287 97 88 99
auto.pipe@msa.hinet.net

THAILAND

POLYSOUDE ASIA
☎ +86 (0) 65 6862 60 08
Jmpan@singnet.com.sg

TURKEY

POLYSOUDE S.A.S.
☎ +33 (0) 2 40 68 11 00
info@polysoude.com

UNITED ARAB EMIRATES

GERMAN GULF ENTERPRISES Ltd
☎ +971 (0) 65 31 61 71
info@polysoude.com

UKRAINE

POLYSOUDE RUSSIA
☎ +7 (0) 495 564 86 81
polysoude@co.ru

UNITED STATES

ASTRO ARC POLYSOUDE Inc.
☎ +1 (0) 661 702 01 41
sales@astroarc.com

VENEZUELA

ENRIVA C.A.
☎ +58 (0) 243 242 45 41
enriva@cantv.net



LATVIA

POLYSOUDE S.A.S.
☎ +33 (0) 2 40 68 11 00
info@polysoude.com

LITHUANIA

POLYSOUDE S.A.S.
☎ +33 (0) 2 40 68 11 00
info@polysoude.com

MALAYSIA

POLYSOUDE ASIA
☎ +86 (0) 65 862 60 08
Jmpan@singnet.com.sg

MEXICO

ASTRO ARC POLYSOUDE Inc.
☎ +1 (0) 661 702 01 41
sales@astroarc.com

NETHERLANDS

POLYSOUDE BENELUX
☎ +31 (0) 653 84 23 36
k.meurs@polysoude.com

POLYSOUDE BENELUX (SERVICE)

☎ +31 (0) 653 38 85 58
h.milder@polysoude.com

POLAND

TEFROMES Sp. z o.o. - IMIELIN
☎ +48 (0) 32 225 62 77
biuro@tefromes.com.pl

UNIDAWELD - BEDZIN

☎ +48 (0) 32 267 05 54
dariusz.szota@unidaweld.pl

ZALCO Sp. z o.o. - WARSZAWA

☎ +48 (0) 22 894 55 30
mbergman@zalco.pl

PORTUGAL

PRAXAIR SOLDADURA S.L.
☎ +34 (0) 91 453 30 00
Luis_Alfredo_de_Andres@praxair.com

ROMANIA

DEBISUD S.R.L.
☎ +40 (0) 255 21 57 85
debisud@rdslink.ro

RUSSIA + C.I.S.

POLYSOUDE RUSSIA
☎ +7 495 564 86 81
polysoude@co.ru

SAUDI ARABIA

ALRUQUEE MACHINE TOOLS
☎ +966 (0) 385 7 63 87
2HCordinator1.Peiris@alruqee.com