

P4 – PORTABLE ALL POSITION ORBITAL TUBE WELDING POWER SOURCE

TIG / GTAW – For Polysoude fusion weld heads and weld heads using cold wire



Ideal for use on site or in your workshop

- Automatic weld procedure generation with an intelligent and intuitive user interface combined with the latest most reliable industrial electronics.
- Real time welding data acquisition.
- High precision inverter power source, compact design with integrated water cooling system.
- Total weight only 35 kg (with cooling water).
- More than 50 years experience specializing in advanced welding technology.



P4 power source with TS type tube-sheet weld head



P4 power source with MU type open weld head using cold wire

UNIQUE FEATURES

- Automatic weld procedure generation / Synergic-Mode (diameter, wall thickness, material, etc).
- Programming by standard PC using multilingual, graphically assisted welding software.
- Full function remote control.
- Expert help menu for procedure optimisation.
- Automatic weld head recognition.
- Automatic voltage supply adaptation compatible with field power generators (100-230V single phase +/- 10%).
- USB memory stick (saving, loading, archiving).
- Comprehensive real-time welding data acquisition.
- Built-in printer for welding procedure archiving and documentation.
- Built-in closed loop water cooling system with safety valve for weld head and torch.
- Welding gas control with safety valves.
- Closed loop regulation of torch rotation and wire speed.
- Program control by time or angular degrees calibrated in mm/min or inch/min.
- Ethernet & Internet compatible.
- Compatible with standard peripheral equipment – bar code reader, oxygen analyser etc.
- Error-diagnostic system.



Off-line & on-line programming with standard PC as well as optional touch screen



USB memory stick for saving, loading and archiving of welding programs and monitored weld data

ACCESSORIES

- Large 10,4" color touch screen with multilingual, graphically assisted welding software.
- Adapter kits to use many existing makes of weld head.
- Manual tack welding kit including water-cooled TIG / GTAW torch.
- Dual weld head switch box.
- Extension cable (15 m).
- Gas hose.
- Pressure regulator.

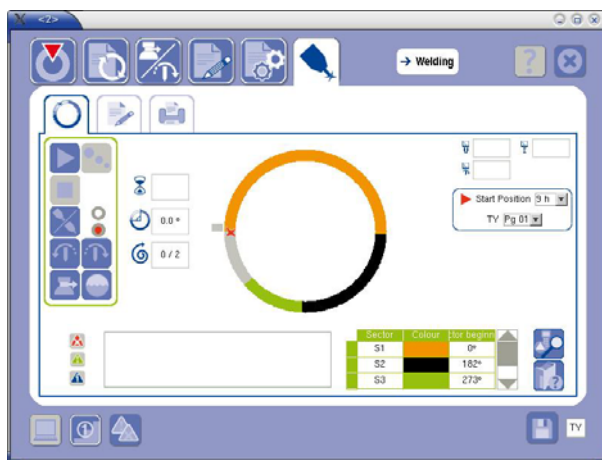


Built-in printer. Perfect for weld procedure monitoring and traceability.

P4 – PORTABLE ALL POSITION ORBITAL TUBE WELDING POWER SOURCE

POWER SOURCE SPECIFICATION

| | |
|---|--|
| Input power | Single phase + earth 100 V / 115 V / 200 V / 230 V ± 10 % 50 / 60 Hz |
| Open circuit voltage | 80 V |
| Isolation class | F |
| Protection class | IP 23 |
| Welding current standard (steps of 1 A) | Range 170 A: 3 to 170 A (200 V / 230 V) 3 to 130 A (100 V / 115 V) |
| High precision (steps of 1/10 A) | Range 50 A: 3 to 50 A (100 / 230 V) |
| Welding current precision | ± 1% when I>100 A and ± 1 A when I≤100 A |
| Duty cycle | 170 A / 25% at 230 V ■ 130 A / 40% at 115 V 110 A / 100% at 230 V ■ 100 A / 100% at 115 V |
| Motion controls | Torch rotation: constant or pulsed Wire feeding: constant or pulsed / automatic wire retract |
| Shielding gas control | Welding gas, backing gas with flow safety valve |
| Power source cooling | Forced ventilation |
| Welding torch cooling | Built-in closed loop water cooling system with flow safety valve |
| Display / recording (non-volatile) of real values during welding | Arc voltage, welding current, electrode position in angular degrees, rotation and wire speed |
| Weld program storage / transfer | USB memory stick |
| Real time data acquisition | Internal PC memory |
| Dimensions L x W x H | 630 x 320 x 500 mm |
| Weight | 35 kg (incl. cooling water, touch screen and printer) |
| Standards | EN 60974-1 / EN 60974-10 |



Multilingual, graphically assisted welding software



Full function remote control