

P6 SERIES

TIG - DC - Cold Wire / Hot Wire

Mobile Power Source for orbital tube welding



POLYSOUDE
THE ART OF WELDING

PL6 SERIES

Mobile Power Source for orbital tube welding

Compatible with all Polysoude™ welding heads particularly with those equipped with Arc Voltage Control (AVC) and Torch Oscillation Control (OSC)

Advantages

- ▶ Automatic welding procedure generation with an intelligent and intuitive user interface combined with the latest most reliable industrial electronics
- ▶ Help for optimising welding procedures
- ▶ Real time welding data acquisition
- ▶ High precision inverter power source, compact design with built-in water cooling system for welding head and torch

Resulting from 50 years' experience in mastering welding technologies



General Characteristics

- Program control by time or angular degrees calibrated in mm/min or inch/min
- Comprehensive real-time welding data acquisition
- Error-diagnostic system
- Automatic welding head recognition
- Built-in printer for welding procedure archiving and documentation
- Ethernet compatible
- Closed loop regulation of torch rotation and wire speed
- Built-in Arc Voltage Control (AVC) and Torch Oscillation Control (OSC)
- Torch gas control with safety valve and flow detection
- Built-in closed loop water cooling system with safety valve for welding head and torch



Offline & online programming with standard PC as well as optional touch screen



USB memory stick for saving, loading and archiving of welding programs and monitored welding data



Compatible with standard peripheral equipment: printer, bar code reader, oxygen indicator etc.



Full function remote control 4-axes or 6-axes with welding program selection

Associated Welding Heads



▶ MU Series

Open welding heads with or without AVC and OSC for TIG tube to tube welding with filler wire



▶ TS Series

Open and closed welding heads with or without AVC for TIG tube to tubesheet welding with or without filler wire



▶ Polycar Series

Open type carriage welding heads with AVC and OSC for welding of large diameter tubes and pipes, with filler wire

Wire Feeders



▶ Polyfil-3

External wire feeder and other integrated wire feeders

Welding Solutions



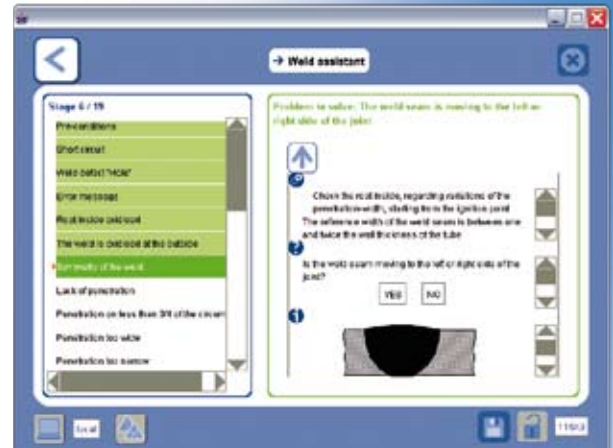
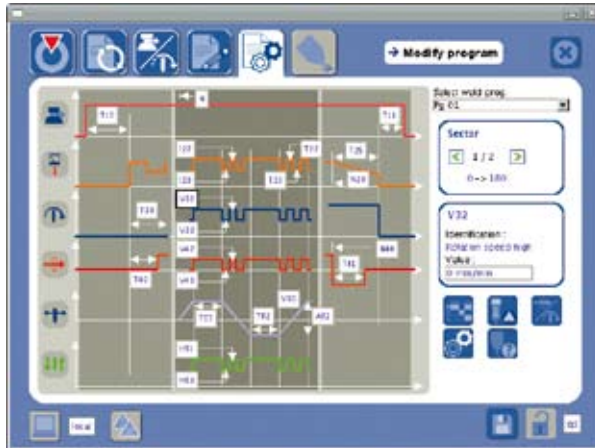
▶ Mechanised Welding Systems

TIG – Cold Wire, Hot Wire
MIG/MAG, Plasma

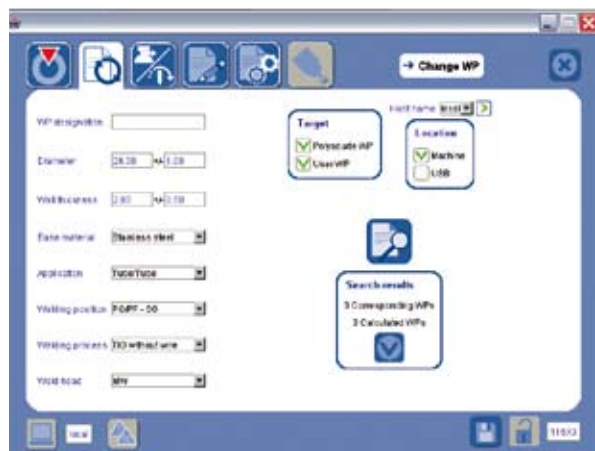
Graphical User Interface (GUI): Just follow the instructions!

► Intuitive graphical interface

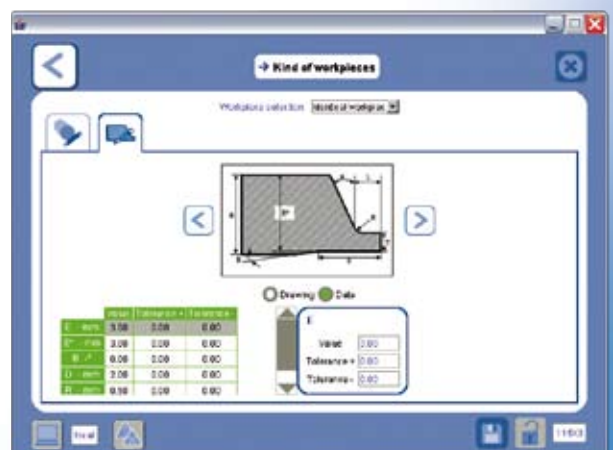
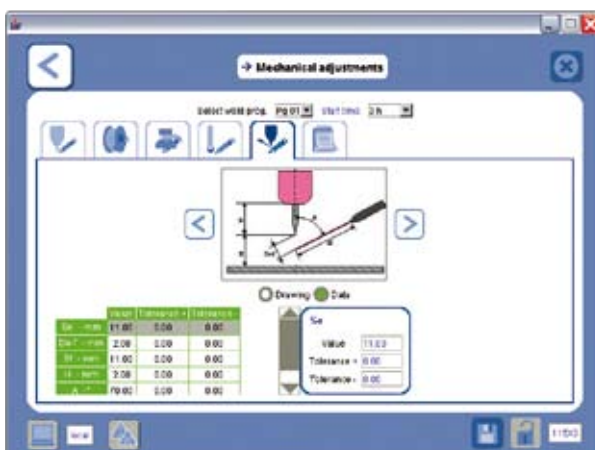
With multilingual “Help” menu for optimised welding programs



► Synergic mode auto-programming



► Traceability and complete documentation of mechanical and electrical parameters





Technical Specification

Welding method	TIG - Cold Wire	TIG - Hot Wire
Input power	Three phase 400 V / 415 V \pm 10 % - 50 / 60 Hz incl. multi voltage kit option from 200 V to 480 V	Three phase 400 V / 415 V \pm 10 % - 50 / 60 Hz
Open circuit voltage	98 V	78 V
Insulation class	F	
Protection class	IP 23S (touch screen closed)	
Welding current range Hot Wire current range	5 to 300 A - constant or pulsed	5 to 520 A - constant or pulsed 3 to 140 A
Welding current precision	\pm 1 A when $I \leq 100$ A and \pm 1% when $I > 100$ A	
Duty cycle welding current Duty cycle Hot Wire	300 A / 60 % - 240 A / 100 %	\geq 520 A / 60 % - 420 A / 100 % 140 A / 100 %
Motion controls	Torch rotation: constant or pulsed Wire feeder: constant or pulsed / automatic wire retract AVC - Arc Voltage Control OSC - Torch Oscillation Control	
Shielding gas control	Welding gas, backing gas, with flow safety valve	
Power source cooling	Forced ventilation	
Welding torch cooling	Built-in closed loop water cooling system with flow safety valve	External cooling system with internal flow safety valve
Display / recording (non-volatile) of real values during welding	Arc Voltage, welding current, electrode position in angular degrees, welding speed and wire speed	
Real time data acquisition	Hard disc / USB memory stick	
Dimensions L x W x H	630 x 470 x 795 mm 630 x 470 x 970 mm (incl. multi voltage option) 950 x 560 x 1130 mm (incl. multi voltage + trolley option)	800 x 470 x 950 mm 1060 x 530 x 1145 mm (incl. trolley option)
Weight	75 kg 115 kg (incl. multi voltage option)	138 kg 154 kg (incl. trolley option)
Standards	EN 60974-1 / EN 60974-10	



Options and Accessories

- Large 10,4" colour touch screen with multilingual, graphically assisted welding software
- Laptop
- Full function remote control 6-axes
- Wire feeder
- AVC - Arc Voltage Control
- OSC - Torch Oscillation Control
- Interface for welding manipulators for mechanised welding (positioner, column and boom, seam welder...)
- Mini-printer
- Hot Wire capability
- Multi voltage kit 200 V to 480 V (not for Hot Wire version)
- Control kit for other than POLYSOUDE™ welding heads
- Manual tack welding kit including water-cooled TIG torch
- Extension cable (15 m) for welding heads
- Kit for backing gas
- 2nd integrated cooling unit
- Dual welding head switch box
- Trolley

POLYSOUDE : Related Services

► Guidance and technical support

A welding application specialist in your area will advise you on the welding process and appropriate equipment for your application.

► Commissioning / Training

A complete training program will enable you to start using the equipment immediately and in the best way possible.

► Maintenance / Repair

Maintenance and repair operations can be carried out at the Polysoude plant as well as on site by our service network.

► Rental service

Increase the flexibility of your production! A large range of equipment is available for rental from our hire fleet.

Your partners worldwide

AUSTRALIA

POLYSOUDE S.A.S.
☎ +33 (0) 2 40 68 11 00
info@polysoude.com

AUSTRIA

POLYSOUDE AUSTRIA GmbH
☎ +43 (0) 3613 200 36
austria@polysoude.at

BELGIUM

POLYSOUDE BENELUX
☎ +31 (0) 653 84 23 36
k.meurs@polysoude.com

POLYSOUDE BENELUX

(SERVICE)
☎ +31 (0) 653 38 85 58
h.milder@polysoude.com

BRAZIL

AJADE COMÉRCIO INSTALAÇÕES E SERVIÇOS Ltda.
☎ +55 (0) 11 45 24 38 98
fernando@ajade.com.br

BULGARIA

KARWELD FOOD
☎ +359 (0) 29 73 32 15
Karweld@bg400.bg

CANADA

MAG TOOL Inc.
EDMONTON - ALBERTA
☎ 800 661 9983
magtool@magtool.com

MAG TOOL Inc.

CAMBRIDGE - ONTARIO
☎ +1 519 651 10 50
michael@magtool.com

CHINA

POLYSOUDE SHANGHAI CO. Ltd
☎ +86 (0) 21 64 09 78 26
j.zhang@polysoude.cn

CROATIA

EUROARC D.O.O.
☎ +385 (0) 1 2 40 60 77
euroarc@euroarc.hr

CZECH REPUBLIC

POLYSOUDE CZ
☎ +420 602 60 28 55
m.matousek@polysoude.cz

DENMARK

POLYSOUDE DENMARK
☎ +45 (0) 32 94 85 10
orbital@polysoude.dk

EGYPT

POLYSOUDE UK
☎ +44 (0) 1942 820 935
info@polysoude.com

ESTONIA

POLYSOUDE S.A.S.
☎ +33 (0) 2 40 68 11 00
info@polysoude.com

FINLAND

SUOMEN TEKNOHAUS OY
☎ +358 (0) 927 47 2 10
info@teknohaus.fi

FRANCE

POLYSOUDE S.A.S.
☎ +33 (0) 2 40 68 11 00
info@polysoude.com

GERMANY

POLYSOUDE DEUTSCHLAND KORNWESTHEIM
☎ +49 (0) 7154 1796 90
info@polysoude.com

POLYSOUDE DEUTSCHLAND LEVERKUSEN / OPLADEN

☎ +49 (0) 7154 1796 90
info@polysoude.com

ITALY

POLYSOUDE ITALIA SRL
☎ +39 02 93 79 90 94
info@polysoude.it

JAPAN

GMT CO Ltd - KAWASAKI
☎ +81 (0) 44 222 6751
gmt@e-gmt.co.jp

GMT CO Ltd - OSAKA

☎ +81 (0) 789 35 6751
gmt.kansai@e-gmt.co.jp

JORDAN

POLYSOUDE UK
☎ +44 (0) 1942 820 935
info@polysoude.com

NEW ZEALAND

POLYSOUDE S.A.S.
☎ +33 (0) 2 40 68 11 00
info@polysoude.com

NORWAY

TEMA NORGE AS
☎ +47 (0) 51 69 25 00
tor.inge.tjensvoll@tema-norge.no

PAKISTAN

POLYSOUDE S.A.S.
☎ +33 (0) 2 40 68 11 00
info@polysoude.com

PHILIPPINES

POLYSOUDE ASIA
☎ +86 (0) 65 862 60 08
Jmpan@singnet.com.sg

SINGAPORE

POLYSOUDE ASIA
☎ +86 (0) 65 68 62 60 08
Jmpan@singnet.com.sg

SIN SOON HUAT WELDING PRODUCTS PTE. Ltd

☎ +65 (0) 62 65 60 88
wchng@sshcorp.com

SLOVAKIA

CHEMIKO CZ
☎ +420 602 60 28 55
m.matousek@polysoude.cz

SOUTH AFRICA

POLYSOUDE S.A.S.
☎ +33 (0) 2 40 68 11 00
info@polysoude.com

SOUTH KOREA

CHEMIKO CO Ltd
☎ +82 (0) 2 567 5336
chemiko@chol.com

SPAIN

PRAXAIR SOLDADURA S.L.
☎ +34 (0) 91 78 55 77 09
Luis_Alfredo_de_Andres@praxair.com

SWEDEN

POLYSOUDE BENELUX
☎ +31 (0) 653 84 23 36
k.meurs@polysoude.com

SWITZERLAND

POLYSOUDE (SWITZERLAND) Inc.
☎ +41 (0) 43 243 50 80
contact@polysoude.ch

TAIWAN R.O.C.

FIRST ELITE ENT. CO. Ltd
☎ +886 (0) 2 62 97 88 99
auto.pipe@msa.hinet.net

THAILAND

POLYSOUDE ASIA
☎ +86 (0) 65 6862 60 08
Jmpan@singnet.com.sg

TURKEY

POLYSOUDE S.A.S.
☎ +33 (0) 2 40 68 11 00
info@polysoude.com

UNITED ARAB EMIRATES

GERMAN GULF ENTERPRISES Ltd
☎ +971 (0) 65 31 61 71
info@polysoude.com

UKRAINE

POLYSOUDE RUSSIA
☎ +7 (0) 495 564 86 81
polysoude@co.ru

UNITED STATES

ASTRO ARC POLYSOUDE Inc.
☎ +1 (0) 661 702 01 41
sales@astroarc.com

VENEZUELA

ENRIVA C.A.
☎ +58 (0) 243 242 45 41
enriva@cantv.net

POLAND

TEFROMES Sp. z o.o. - IMIELIN
☎ +48 (0) 32 225 62 77
biuro@tefromes.com.pl

UNIDAWELD - BEDZIN

☎ +48 (0) 32 267 05 54
dariusz.szota@unidaweld.pl

ZALCO Sp. z.o.o. - WARSZAWA

☎ +48 (0) 22 894 55 30
mbergman@zalco.pl

PORTUGAL

PRAXAIR PORTUGAL GASES, S.A.
☎ +351 (0) 229 438 320
pbarbosa@praxair.com

ROMANIA

DEBISUD S.R.L.
☎ +40 (0) 255 21 57 85
debisud@rdslink.ro

RUSSIA + C.I.S.

POLYSOUDE RUSSIA
☎ +7 495 564 86 81
polysoude@co.ru

SAUDI ARABIA

ALRUQEE INDUSTRIAL MARKETING COMPANY
☎ +966 (0) 385 7 63 87
I1Manager.Khaldoun@alruqee.com



GREAT BRITAIN

POLYSOUDE UK
☎ +44 (0) 1942 820 935
info@polysoude.com

GREECE

POLYSOUDE S.A.S.
☎ +33 (0) 2 40 68 11 00
info@polysoude.com

HUNGARY

POLYWELD Kft.
☎ +36 (0) 28 42 22 36
polyweld@polyweld.hu

INDIA

POLYSOUDE INDIA
☎ +91 (0) 20 40 03 59 31
ab.kulkarni@polysoude.in

INDONESIA

P.T. TIRA AUSTENITE
☎ +62 (0) 21 460 25 94
yusuf@tiraustenite.com

ISRAEL

POLYSOUDE S.A.S.
☎ +33 (0) 2 40 68 11 00
info@polysoude.com

POLYSOUDE BENELUX (SERVICE)

☎ +31 (0) 653 38 85 58
h.milder@polysoude.com

LATVIA

POLYSOUDE S.A.S.
☎ +33 (0) 2 40 68 11 00
info@polysoude.com

LITHUANIA

POLYSOUDE S.A.S.
☎ +33 (0) 2 40 68 11 00
info@polysoude.com

MALAYSIA

POLYSOUDE ASIA
☎ +86 (0) 65 862 60 08
Jmpan@singnet.com.sg

MEXICO

ASTRO ARC POLYSOUDE Inc.
☎ +1 (0) 661 702 01 41
sales@astroarc.com

NETHERLANDS

POLYSOUDE BENELUX
☎ +31 (0) 653 84 23 36
k.meurs@polysoude.com

Polysoude S.A.S.

ZI du Bois Briand • 2 rue Paul Beaupère • BP 41606
F - 44316 NANTES Cedex 3

Tel.: +33 (0) 2 40 68 11 00 • Fax: + 33 (0) 2 40 68 11 88
www.polysoude.com • Mail : info@polysoude.com