

~~electrode and light not there~~

Bode Load Boom Asset No 062

Welding Head

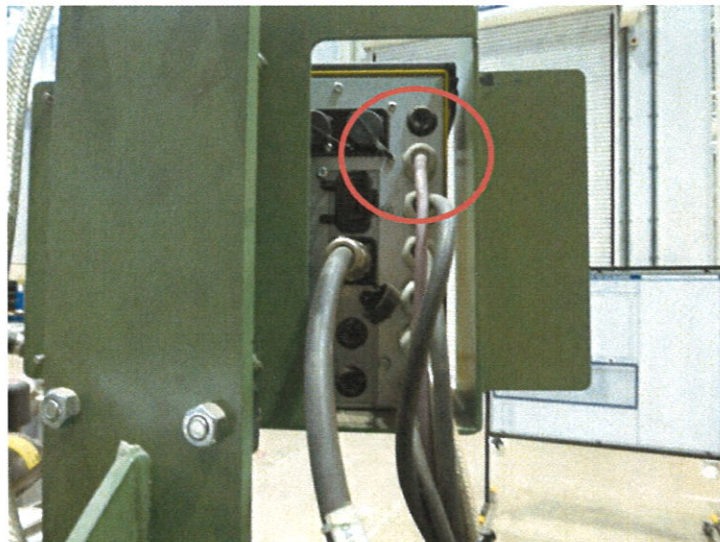


Bode Load Boom Asset No 062

1 x Flex Armoured multicore cable with plug that connected to the control box on the head. See picture



1 x Purple cable that connected the PEK control box. This cable has two solder connections to a small circuit board located at the top rear of the control box. The circuit board has two external sockets. The wires were snipped to show where the cables connected.



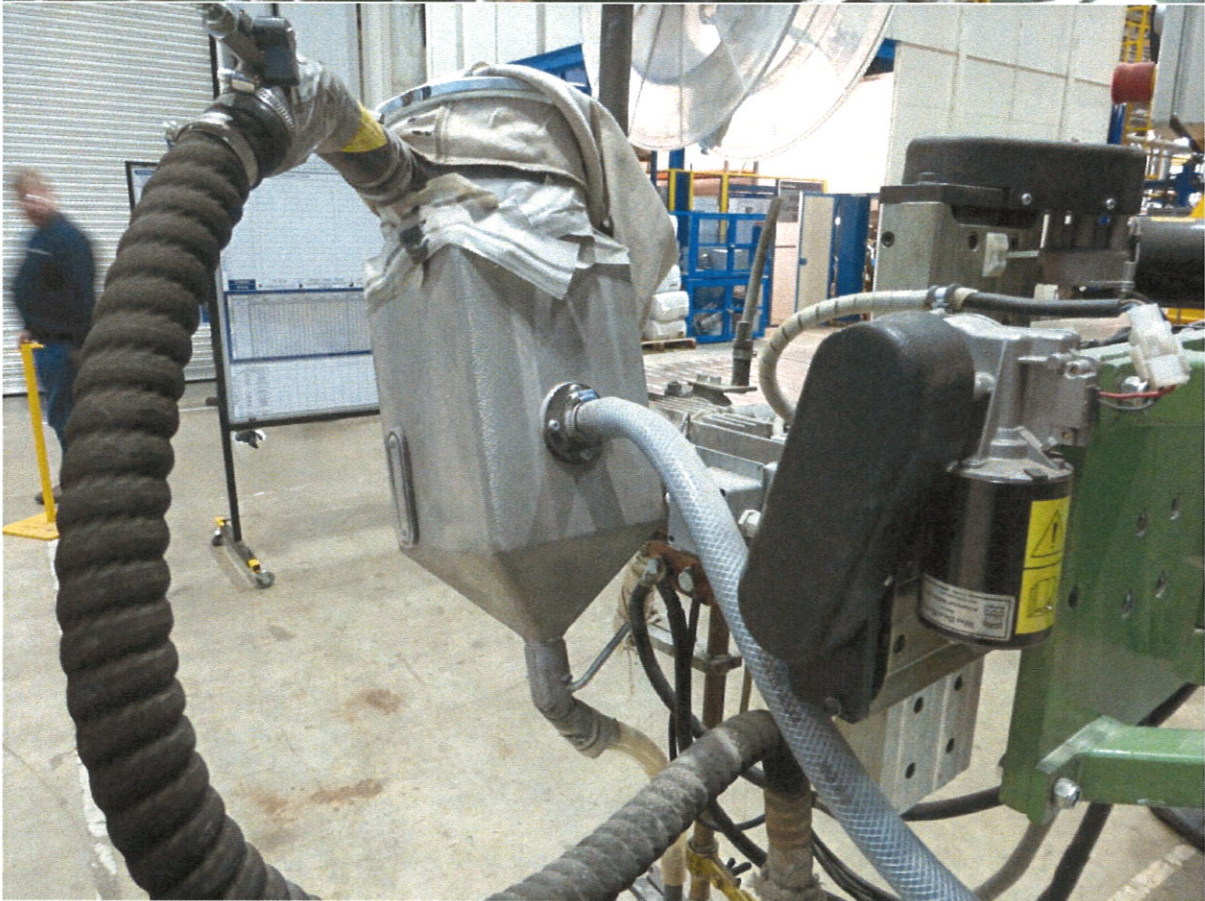
1 x Black multicore with round plug

Also in the tray was the flux delivery hose

Bode Load Boom Asset No 062



Bode Load Boom Asset No 062



Bode Load Boom Asset No 062



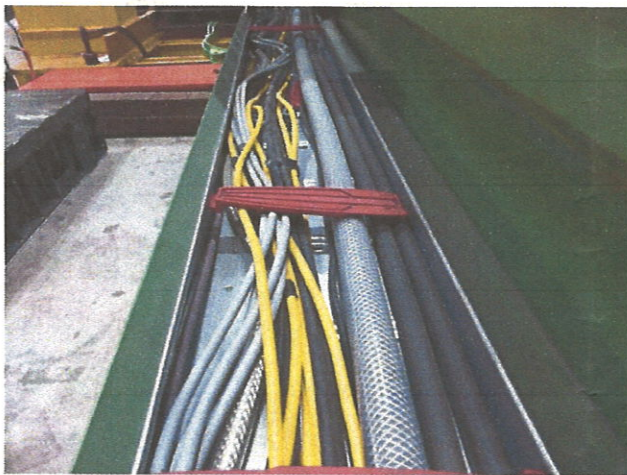
Bode Load Boom Asset No 062

3 of 3

Decommissioning notes



Crossbeam



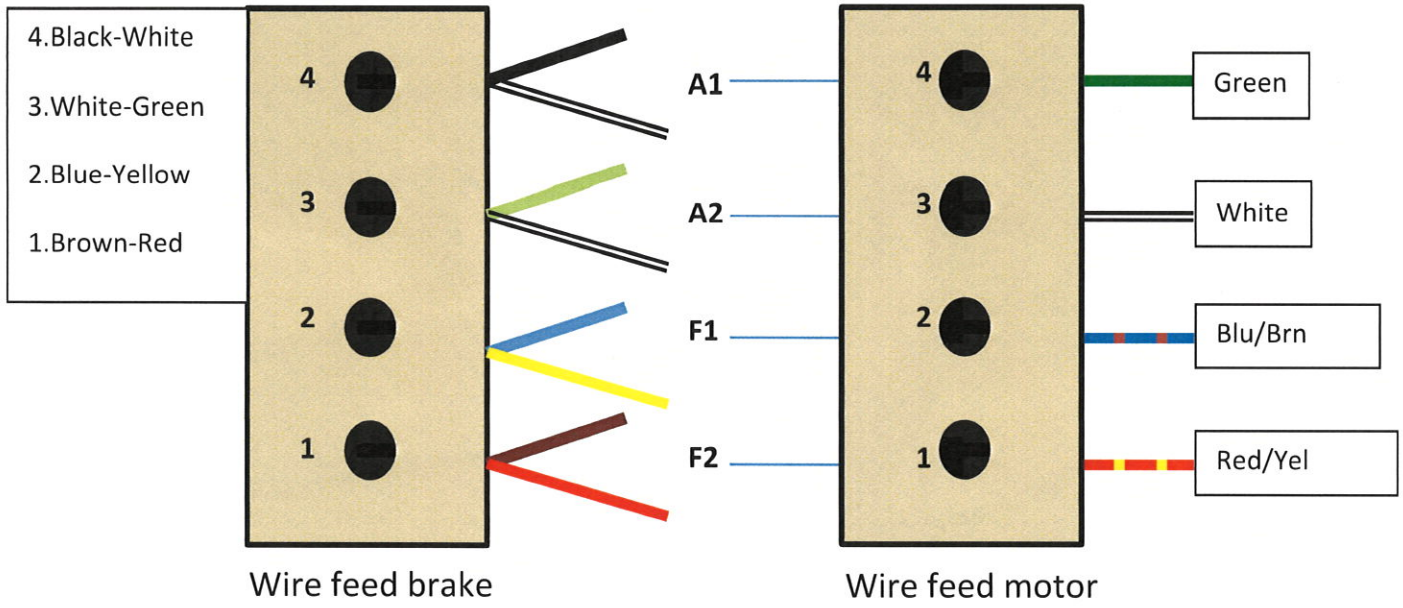
Most of the cables in the cable tray were unused and not connected to anything. These were removed from the cable tray and placed in the packing tray with the other parts.

The cables remaining in the boom cable tray are :-

2 x Large black welding cable that connect to the electrode

Bode Load Boom Asset No 062

Wire Feed Motor



Welding Electrode

2 x Large black cables to electrode



Bode Load Boom Asset No 062

1 x Flex Armoured cable multicore – 4 wires used connected to transformer in Esab unit. Terminal block marked with wire numbers

2 x large black flex cables to “+” terminal

2 x large black flex cables to “-” terminal

1 x Small black cable – Earth Reference

1 x Black multicore with plug

Main power Cabinet

Mains plug removed for safety reasons.

Large power cable to Esab LAF 1001 Terminal marked.

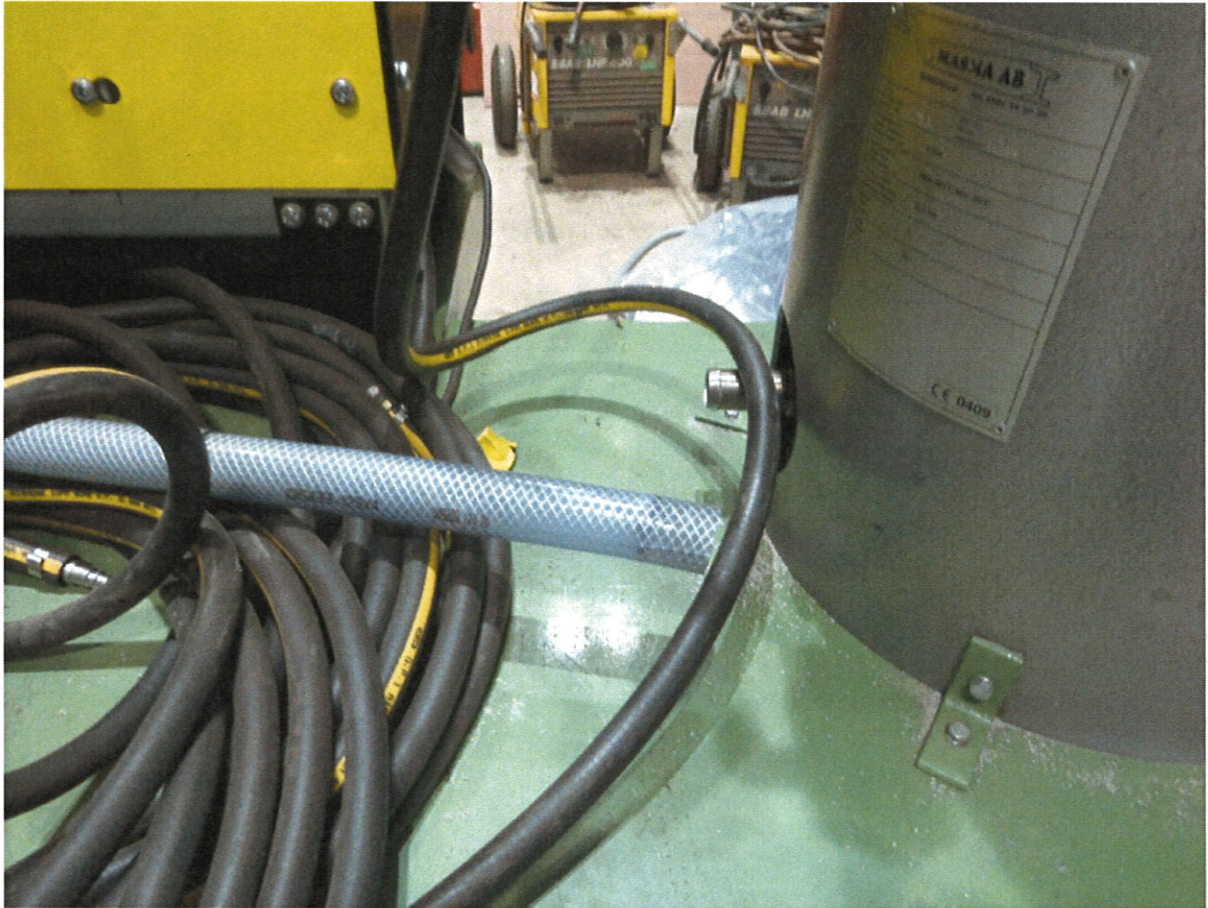
Notes

- Surplus un-used cables removed from trunking and placed in packing crate
- Flux vacuum unit removed from end of boom
- Boom micro-switches backed off to allow removal of cross boom
- All cabinet drawings kept in cabinet
- Operator instruction packed in crate
- All ancillary parts and control boxes packed in crate

Gallery



Bode Load Boom Asset No 062



Bode Load Boom Asset No 062

