

CONVENTIONAL ROTATORS LC RANGE

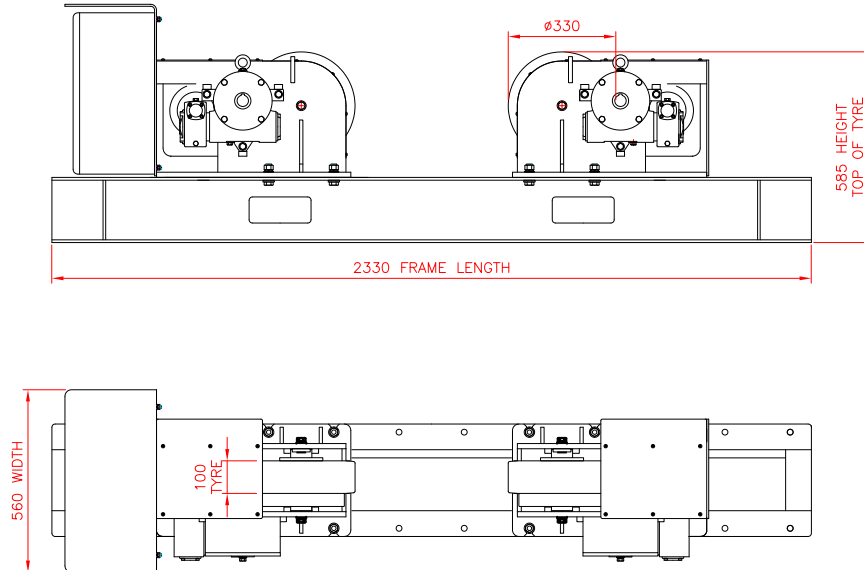


Our heavy duty, built to last conventional rotators are designed and manufactured to tolerate the hardest, hard-wearing and unrelenting workload environments. The powered drive units are controlled by a five-function pendant with a variable speed potentiometer, giving the operator full control of the rotating workpiece.

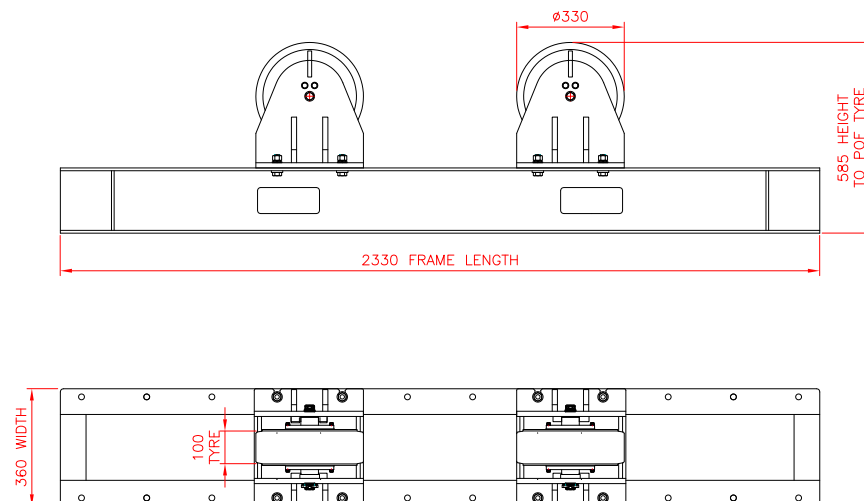
SPECIFICATION	10 TON		20 TON		30 TON	
	DRIVE	IDLER	DRIVE	IDLER	DRIVE	IDLER
Rotation Capacity	10,000kg		20,000kg		30,000kg	
Safe Working Load (kg)	5,000kg	5,000kg	10,000kg	10,000kg	15,000kg	15,000kg
Vessel Size Minimum	235mm	235mm	235mm	235mm	235mm	235mm
Vessel Size Maximum	4900mm	4900mm	4900mm	4900mm	5900mm	5900mm
Tyre Type	Polyurethane	Polyurethane	Polyurethane	Polyurethane	Polyurethane	Polyurethane
Tyre Width	100mm	100mm	180mm	180mm	250mm	250mm
Rotation Speed (mm/min)	100-1100mm		100-1100mm		100-1100mm	
Rotation Drive Motor(s)	2 x 0.37kw		2 x 0.55kw		2 x 0.75kw	
Control Pendant	YES		YES		YES	
Incoming Supply	380/480V		380/480V		380/480V	
Weight (kg)	400kg	275kg	850kg	550kg	1,100kg	700kg
Foot Print - L x W x H (mm)	2330 x 560 x 585	2330 x 340 x 585	2330 x 560 x 585	2330 x 425 x 585	2730 x 560 x 605	2730 x 500 x 605

CONVENTIONAL ROTATORS LC RANGE

10T DRIVE ROTATOR

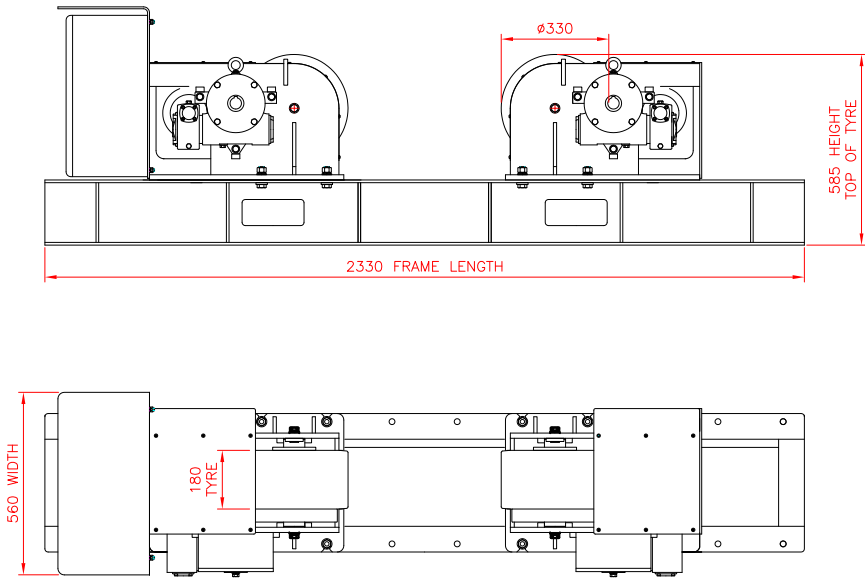


10T IDLER ROTATOR

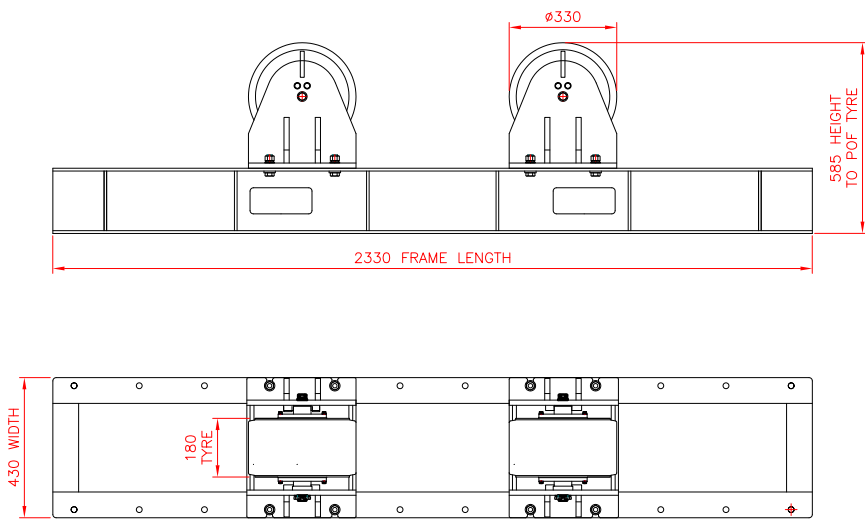


CONVENTIONAL ROTATORS LC RANGE

20T DRIVE ROTATOR

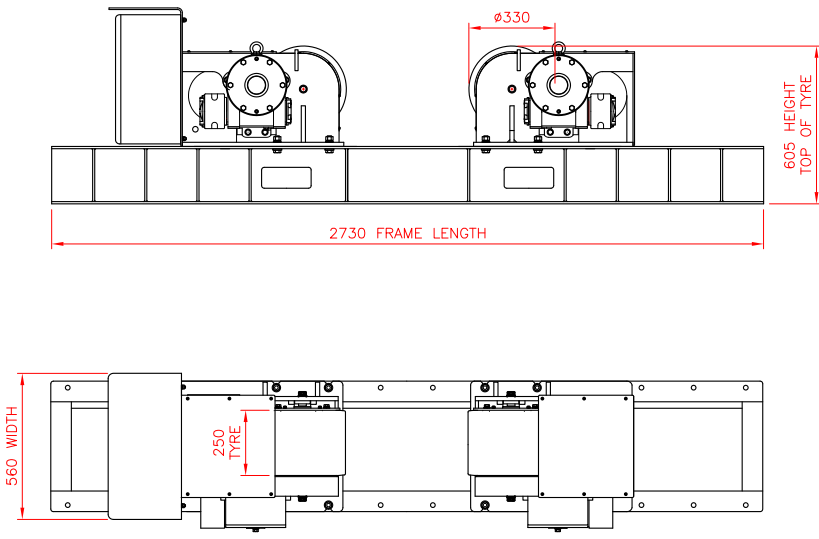


20T IDLER ROTATOR



CONVENTIONAL ROTATORS LC RANGE

30T DRIVE ROTATOR



30T IDLER ROTATOR

