

CR-60 CE ROLLERS 60 Tonne Set Capacity

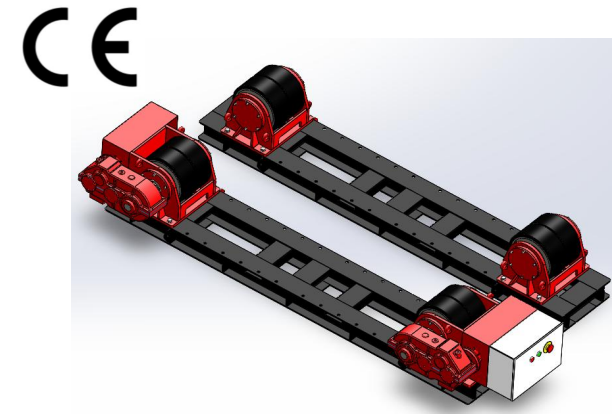
CR60 CE rollers feature all-fabricated-steel base construction with wheel carriages that can be positioned to accommodate vessels of varying diameters around a constant centre-line. One drive motor is inverter controlled variable frequency AC type with fan cooling. Drive two reduction worm and wheel gearboxes are used for enhanced durability and extended overhaul intervals. Drive and idler wheel shafts are housed in deep groove type roller bearings and synchronous rotation. Both the drive roll and idler roll have lifting hole on the frames for easy maneuverability. Control boxes have IP55 rated enclosures and utilize variable frequency AC control electrical systems with full CE certification. In addition, our company has certified by ISO 9001:2015 Quality Management System to ensure all our products establish safe working loads in the weld automation industry.

SPECIFICATIONS

Model	CR-60	Rotation Speed	100-1000mm/min
Turning Capacity	60 ton maximum	Speed control	Variable Frequency Driver
Drive Load Capacity	30 ton maximum	Roller wheels	Steel coated with PU type
Idler Load Capacity	30 ton maximum	Roller size	Ø450*300mm
Adjust Way	Bolt Adjustment	Voltage	400V 50Hz 3Phase
Motor Power	2*2.2 KW	Control system	Remote control 5m cable
Vessel Diameter	500~4500mm	Color	RAL 3003 Red+9005 Black

*Specifications are subject to change without notice.

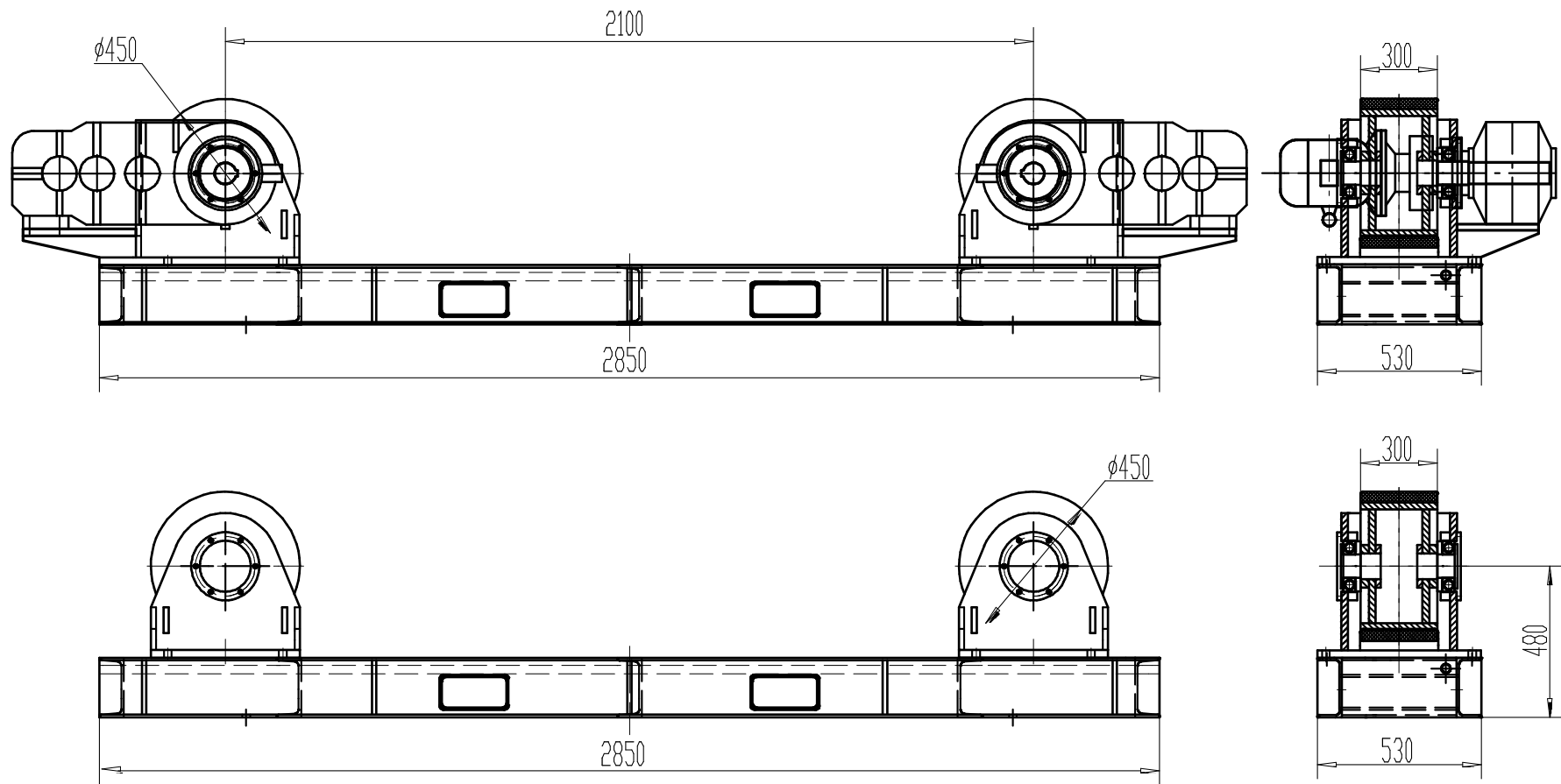
*Two drive units with synchronization rotation can be customized if needed.



Remote Hand Box With 5m Cable

Functions
Emergency Button
Speed Adjust
Rotation Forward
Stop
Rotation Reverse

CR-60 CE ROLLERS 60 Tonne Set Capacity



Wheels C-C	Diameter (mm)	
	Min.	Max.
660 mm	500	1100
1020 mm	1100	1900
1380 mm	1700	2800
1740 mm	2200	3600
2100 mm	2800	4500