



**Westermans International Ltd**  
welding and cutting solutions that don't cost the earth

Westermans International Ltd  
Unit 4 Midland Distribution Centre  
Markfield Road, Groby  
Leicestershire, LE6 OFS  
United Kingdom

**Tel:** +44 (0)116 269 6941  
**Email:** sales@westermans.com  
**Web:** www.westermans.com  
**Company Number:** 4945851  
**VAT Number:** GB 399 6230 06



**Warranty Included**  
On all new & used machines



**Worldwide Delivery**  
We handle everything for you!



**600+ machines in stock**  
Find a solution for your requirements

**Brand:** Fronius

**Model:** HMI-T10

**Product ID:** [18826](#)

**Condition:** Used

## Fronius Compact Hot Wire Weld Cladding Station Controller HMI-T10CC

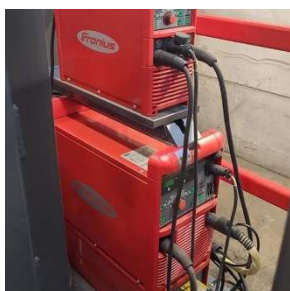


### Specifications:

- ✓ Input Power: 3 phase
- ✓ Output Power: 300A
- ✓ Max. Workpiece Capabilities:  
Height – 1400mm, Diameter – 1000mm, Weight – 2500KG
- ✓ Equipment Dims (LxWxH):  
2665mm x 1900mm x 4020mm

### Key Features:

- ✓ A footprint of just 4.5m<sup>2</sup> makes this the most compact solution in high-end cladding.
- ✓ The complete system has been regularly calibrated and serviced by Fronius until we purchased it.
- ✓ Intuitive HMI-T10 controls offer central control of all system components & multi-user management via 21" touchscreen panel.
- ✓ High-precision torch positioning & horizontal torch oscillation with servo-controlled motors.
- ✓ Hot wire TIG capabilities.



### What's Included?

- ✓ Fronius Compact Cladding System (column & boom, FRT 1250 rotary welding table, HMI-TIOCC controller)
- ✓ Fronius Transtig 5000 Job
- ✓ FK 4000R cooling unit
- ✓ Fronius Transtig 2000 Job
- ✓ KD1500-D11 wire feeder
- ✓ TTHW300M machine torch
- ✓ Associated cables
- ✓ Our in-house 4 month warranty
- ✓ lifetime telephone support.

### Capabilities:

- ✓ Bore to bore
- ✓ Bore to bore advanced
- ✓ Flange with bore
- ✓ Straight/conical bore
- ✓ Multi-diameter
- ✓ Ring groove
- ✓ Cylindrical bore

## Why choose this machine?

Fronius weld cladding machines are renowned as the best in their field.

Maintained and serviced by Fronius until purchased by us, this system has had the highest level of care. With calibration certificate valid until only November last year. We can also arrange Fronius to commission and calibrate on site if required following delivery.

The compact design allows for more ergonomic use, as well as freeing up space on the factory floor. Being easy to dismantle and re-assemble, it's also a mobile solution with short commissioning times.

Features make this machine easy to use, with some of the best technology on the market for performance and quality.

## Who is this machine for?

Engineering and fabrication companies supplying critical parts that need corrosion and wear protection. Weld cladding and overlay reduces maintenance costs, as well as extending equipment life. It also improves pe

Industries include:

- Nuclear
- Oil & Gas
- Petrochemical & chemical processing
- Power generation
- Aerospace

- Mining
- Marine & shipbuilding
- Food & beverage processing
- Heavy machinery
- Pulp & paper



## Need more information?

Call us on +44 (0)116 269 6941 or  
email us [sales@westermans.com](mailto:sales@westermans.com)

### Options:

Torch modification for up to 500A output power  
Miller Proheat 35 induction heating unit  
Commissioning & calibration by Fronius

**For a quotation on this machine, please contact the sales team.**

**Or hit "enquire now" to send an enquiry via the website and your price will be emailed back to you shortly.**

\*For full specifications on each system component, see the "PDFs" section on our website listing.  
Specifications are subject to change without notice at manufacturer's discretion. Check with us for confirmation if needed.

### Delivery Information:

All quotes are supply only, ex-works Leicester, UK unless otherwise stated. Shipping quotes can be provided for UK & International orders. Or you can arrange collection via your own carrier.

### Payment Terms:

Quotations are valid for 14 days on new equipment, 30 days on used equipment (subject to availability)  
Payment is in advance against Proforma Invoice unless otherwise stated, we accept £ GBP, Euros or USD.  
UK & international payments are preferred by bank transfer, UK customers may also pay by card or cash.  
All cancelled orders are subject to 25% cancellation fee.  
For full T&Cs of sale and warranty, please visit <https://www.westermans.com/faq.aspx>



Trusted for over 50 years.

Westermans is rated  
**Excellent**

Based on 665 reviews



★ Trustpilot

**Brands  
you trust**



Follow us on

Westermans International Ltd, Unit 4 Midland Distribution Centre, Markfield Road, Groby, Leicestershire, LE6 0FS, United Kingdom

Tel: +44 (0)116 269 6941 | Email: [sales@westermans.com](mailto:sales@westermans.com) | Web: [www.westermans.com](http://www.westermans.com)

Company Number: 4945851 | VAT Number: GB 399 6230 06