

INLINE WELDING





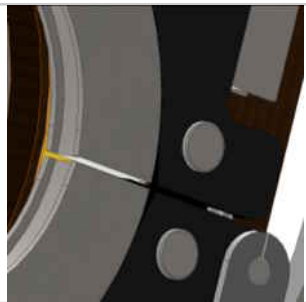
∅6 - ∅40 mm

∅0,25" - ∅1,5"

- **Water-cooled head**
- Dual-wing opening
- Clamping jaws - **stainless steel** (1 kit per diameter)
- Tungsten electrode specific to diameter
- Motor with coder: **allows for tungsten electrode start-up at all angles**
- **High protection** against start-up without tungsten electrode

Weight: 8.8 kg / 19 lbs

- All machines are delivered in their individual case



Tool-free jaw fitting



Remote control keypad



Driven by AXXAIR power source (cf compatibility table)



Adjustable spring- loaded system: to account for tube "out of round"

References	Accessories	Consumables
SATF-40ND	<p>SSED-16: offset tungsten electrode support ∅ 1.6 mm offset range 4 to 7.5 mm</p> <p>SSED-24: offset tungsten electrode support ∅ 2.4 mm offset range 4 to 7.5 mm</p> <p>SAFS-210 : Wire harness extension 10 M</p> <p>SMN40-XX Clamping jaws ∅ in mm</p> <p>SATF40ND-A001 Window for SATF-40ND and MI</p> <p>SAGC-121 : SATF-40 /65 /115 Handler</p>	<p>SCE16-XX : ∅ 1,6 mm</p> <p>SCE24-XX : ∅ 2,4 mm</p>





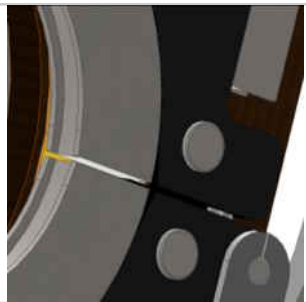
Ø6 - Ø65 mm

Ø0,25" - Ø2,5"

- **Water-cooled head**
- Dual-wing opening
- Clamping jaws - **stainless steel** (1 kit per diameter)
- Tungsten electrode specific to diameter
- Motor with coder: **allows for tungsten electrode start-up at all angles**
- **High protection** against start-up without tungsten electrode

Weight: 9.2 kg / 20 lbs

- All machines are delivered in their individual case



Tool-free jaw fitting



Remote control keypad



Driven by AXXAIR power source (cf compatibility table)



Adjustable spring- loaded system: to account for tube "out of round"

References	Accessories	Consumables
SATF-65ND	<p>SSED-16: offset tungsten electrode support Ø 1.6 mm offset range 4 to 7.5 mm</p> <p>SSED-24: offset tungsten electrode support Ø 2.4 mm offset range 4 to 7.5 mm</p> <p>SAFS-210 : Wire harness extension 10 M</p> <p>SMN65-XX Clamping jaws Ø in mm</p> <p>SATF65ND-A001 Window for SATF-65ND and MI</p> <p>SAGC-121 : SATF-40 / SATF-65 / SATF-115 Handler</p>	<p>SCE16-XX : Ø 1,6 mm</p> <p>SCE24-XX : Ø 2,4 mm</p>





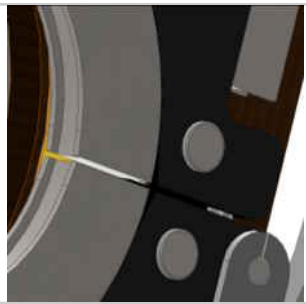
Ø25 - Ø115 mm

Ø1" - Ø4,5"

- **Water-cooled head**
- Dual-wing opening
- Clamping jaws - stainless steel (1 kit per diameter)
- Tungsten electrode specific to diameter
- Motor with coder: **allows for tungsten electrode start-up at all angles**
- **High protection** against start-up without tungsten electrode

Weight: 9.9 kg / 22 lbs

- All machines are delivered in their individual case



Tool-free jaw fitting



Remote control keypad



Driven by AXXAIR power source (cf compatibility table)



Adjustable spring- loaded system: to account for tube "out of round"

References	Accessories	Consumables
SATF-115ND	<p>SSED-16: offset tungsten electrode support Ø 1.6 mm offset range 4 to 7.5 mm</p> <p>SSED-24: offset tungsten electrode support Ø 2.4 mm offset range 4 to 7.5 mm</p> <p>SAFS-210 : Wire harness extension 10 M</p> <p>SMN115-XX Clamping jaws Ø in mm</p> <p>SATF115ND-A001 Window for SATF-115ND and MI</p> <p>SAGC-121 : SATF-40 / SATF-65 / SATF-115 Handler</p>	<p>SCE16-XX : Ø 1,6 mm</p> <p>SCE24-XX : Ø 2,4 mm</p>





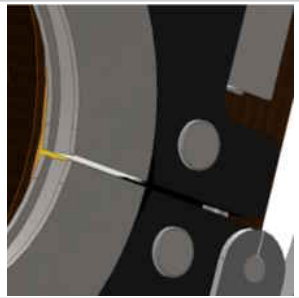
∅6 - ∅40 mm

∅0,25" - ∅1,5"

- Water cooled including outer body
- Stainless steel collets
- Spring mounted axis and spring closing lever: takes in account ovality of the tubes
- Tool free fixing of the collets through a push button: no risk to loose keys..
- Upper window available as an option.
- Dedicated to thin wall tubing up to 2,5 mm (3 mm in some cases)
- **Able to be used under 120A, 100% duty cycle**
- **Narrow head: 41 mm total, 20,5 mm from electrode to the outside**
- Safety Cable integrated in the hosing to avoid pulling on the inner cables

Weight : 8,8 Kg / 19 lbs

- DC Motor with Tachy
- All connectors directly compatible with AMI power sources
- Compatible with AMI Auto calibration feature



Toll-free jaw fitting



All machines are delivered in their individual case



Compatible with AMI power sources (205, 207 models)



Connectors compatible for AMI power sources

References	Accessories	Consumables
SATF-40MI	<p>SSED-16: offset tungsten electrode support ∅ 1.6 mm offset range 4 to 7.5 mm</p> <p>SSED-24: offset tungsten electrode support ∅ 2.4 mm offset range 4 to 7.5 mm</p> <p>SAFS-210 : Wire harness extension 10 M</p> <p>SMN40-XX Clamping jaws ∅ in mm</p> <p>SATF40ND-A001 Window for SATF-40ND and MI</p> <p>SAGC-121 : SATF-40 /65 /115 Handler</p>	<p>SCE16-XX : ∅ 1,6 mm</p> <p>SCE24-XX : ∅ 2,4 mm</p>





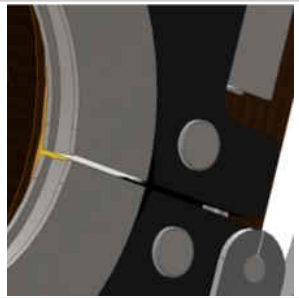
∅6 - ∅65 mm

∅0,25" - ∅2,5"

- Water cooled including outer body
- Stainless steel collets
- Spring mounted axis and spring closing lever: takes in account ovality of the tubes
- Tool free fixing of the collets through a push button: no risk to loose keys..
- Upper window available as an option.
- Dedicated to thin wall tubing up to 2,5 mm (3 mm in some cases)
- **Able to be used under 120A, 100% duty cycle**
- **Narrow head: 41 mm total, 20,5 mm from electrode to the outside**
- Safety Cable integrated in the hosing to avoid pulling on the inner cables

Weight : 9,2 Kg / 20 lbs

- DC Motor with Tachy
- All connectors directly compatible with AMI power sources
- Compatible with AMI Auto calibration feature



Toll-free jaw fitting



All machines are delivered in their individual case



Compatible with AMI power sources (205, 207 models)



Connectors compatible for AMI power sources

References	Accessories	Consumables
SATF-65MI	<p>SSED-16: offset tungsten electrode support ∅ 1.6 mm offset range 4 to 7.5 mm</p> <p>SSED-24: offset tungsten electrode support ∅ 2.4 mm offset range 4 to 7.5 mm</p> <p>SAFS-210 : Wire harness extension 10 M</p> <p>SMN65-XX Clamping jaws ∅ in mm</p> <p>SATF65ND-A001 Window for SATF-65ND and MI</p> <p>SAGC-121 : SATF-40 / SATF-65 / SATF-115 Handler</p>	<p>SCE16-XX : ∅ 1,6 mm</p> <p>SCE24-XX : ∅ 2,4 mm</p>





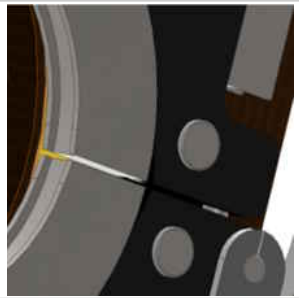
Ø25 - Ø115 mm

Ø1" - Ø4,5"

- Water cooled including outer body
- Stainless steel collets
- Spring mounted axis and spring closing lever: takes in account ovality of the tubes
- Tool free fixing of the collets through a push button: no risk to loose keys..
- Upper window available as an option.
- Dedicated to thin wall tubing up to 2,5 mm (3 mm in some cases)
- **Able to be used under 120A, 100% duty cycle**
- **Narrow head: 41 mm total, 20,5 mm from electrode to the outside**
- Safety Cable integrated in the hosing to avoid pulling on the inner cables

Weight : 9,9 Kg / 22 lbs

- DC Motor with Tachy
- All connectors directly compatible with AMI power sources
- Compatible with AMI Auto calibration feature



Toll-free jaw fitting



All machines are delivered in their individual case



Compatible with AMI power sources (205, 207 models)



Connectors compatible for AMI power sources

References	Accessories	Consumables
SATF-115MI	<p>SSED-16: offset tungsten electrode support Ø 1.6 mm offset range 4 to 7.5 mm</p> <p>SSED-24: offset tungsten electrode support Ø 2.4 mm offset range 4 to 7.5 mm</p> <p>SAFS-210 : Wire harness extension 10 M</p> <p>SMN115-XX Clamping jaws Ø in mm</p> <p>SATF115ND-A001 Window for SATF-115ND and MI</p> <p>SAGC-121 : SATF-40 / SATF-65 / SATF-115 Handler</p>	<p>SCE16-XX : Ø 1,6 mm</p> <p>SCE24-XX : Ø 2,4 mm</p>





SATF40ND-A001



SATF65ND-A001



SATF115ND-A001

VAL-CO05



SMN40-xx
SMN65-xx
SMN115-xx



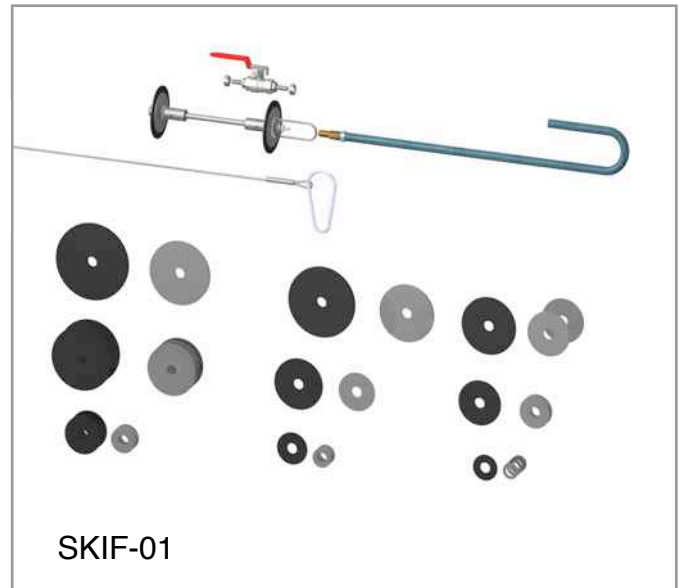
SAFS-210



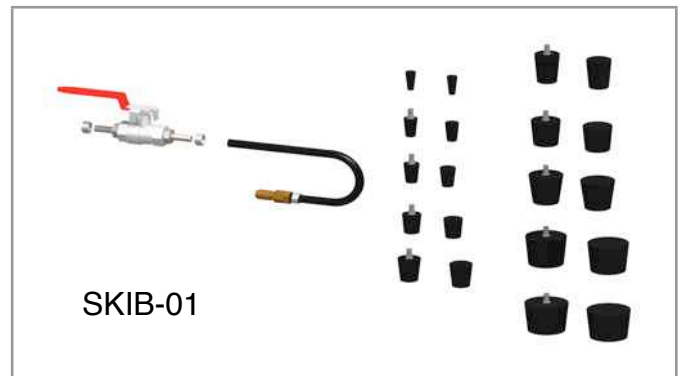
SSED



SAGC-121



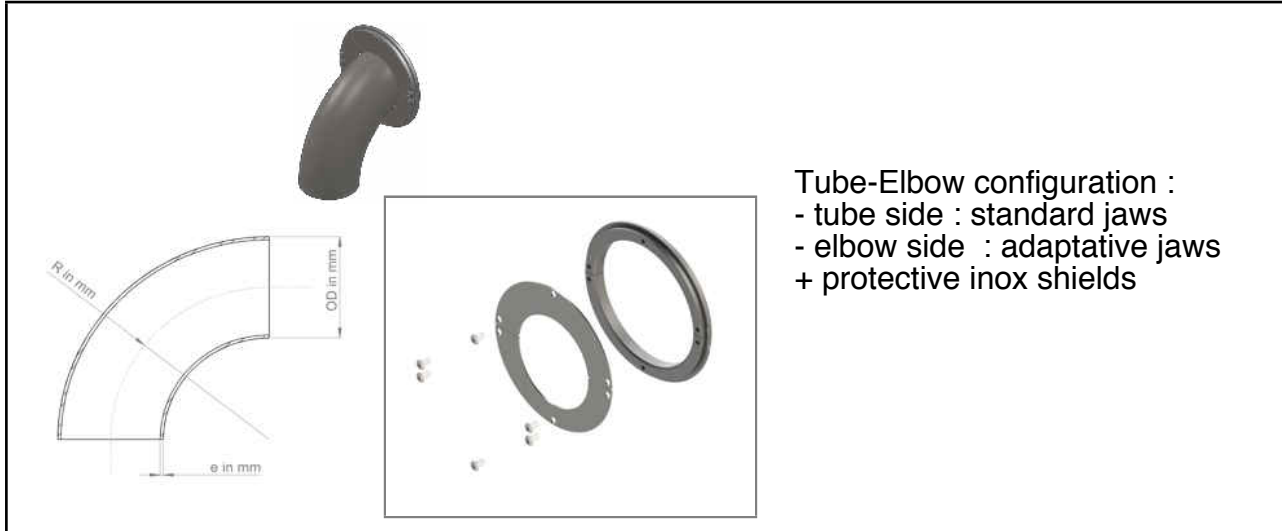
SKIF-01



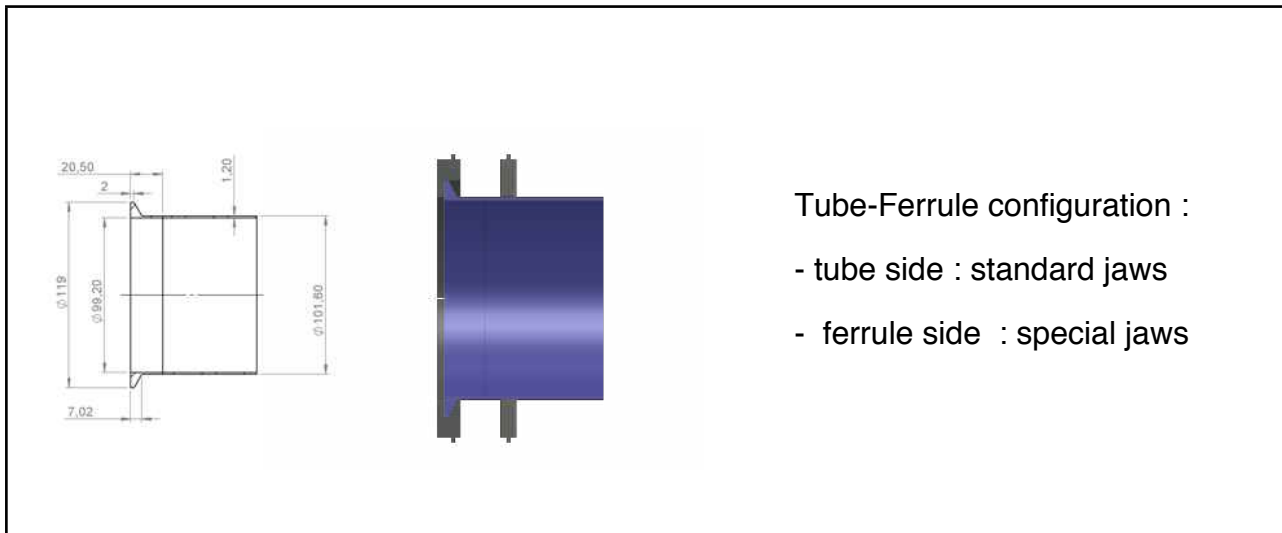
SKIB-01

Accessories	Consumables	Options
VAL-CO05 : Protection case for shipping and storage for SATF models		
SAFS-210 : Wire harness extension 10 M		
SKIB-01: gas protection kit - plugs Ø 6 to 41 mm	SMN40-XX Clamping jaws Ø in mm	SSED-16: offset tungsten electrode support Ø 1.6 mm offset range 4 to 7.5 mm
SKIF-01: gas protection kit - membranes Ø 40 to 120 mm	SMN65-XX Clamping jaws Ø in mm	SSED-24: offset tungsten electrode support Ø 2.4 mm offset range 4 to 7.5 mm
SAGC-121 : SATF-40 / SATF-65 / SATF-115 Handler for ND and MI models	SMN115-XX Clamping jaws Ø in mm	SATFxxxND-A001 : Window for SATF-xxx ND and MI models

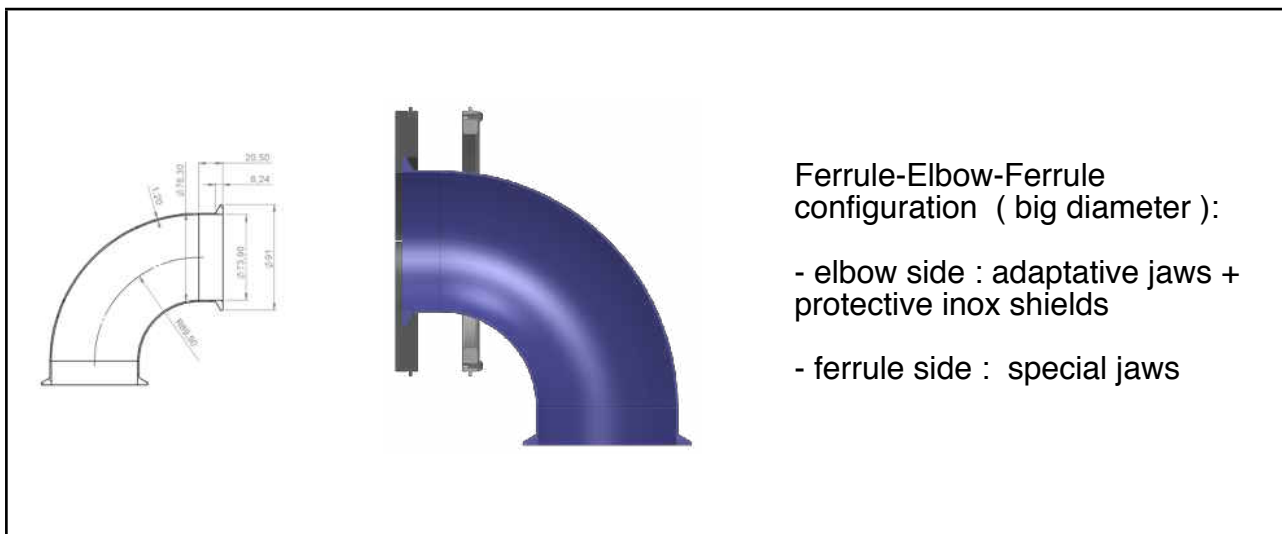




Tube-Elbow configuration :
- tube side : standard jaws
- elbow side : adaptative jaws
+ protective inox shields

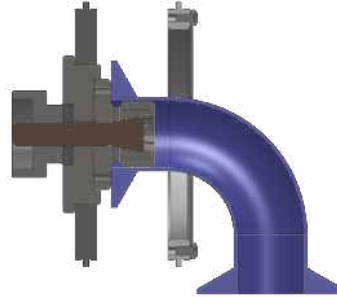
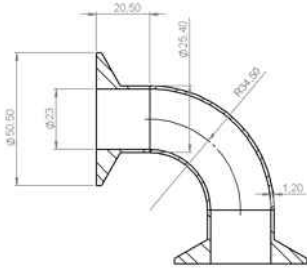


Tube-Ferrule configuration :
- tube side : standard jaws
- ferrule side : special jaws



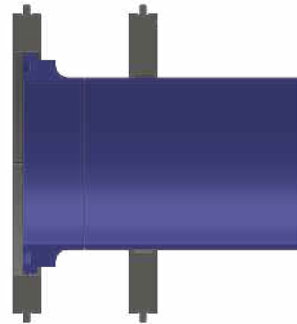
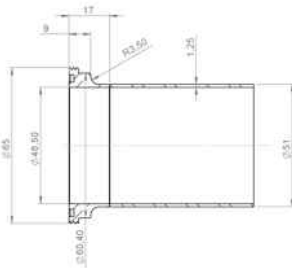
Ferrule-Elbow-Ferrule configuration (big diameter):
- elbow side : adaptative jaws + protective inox shields
- ferrule side : special jaws





Ferrule-Elbow-Ferrule configuration (small diameter):

- elbow side : adaptative jaws + protective inox shields
- ferrule side : special jaws



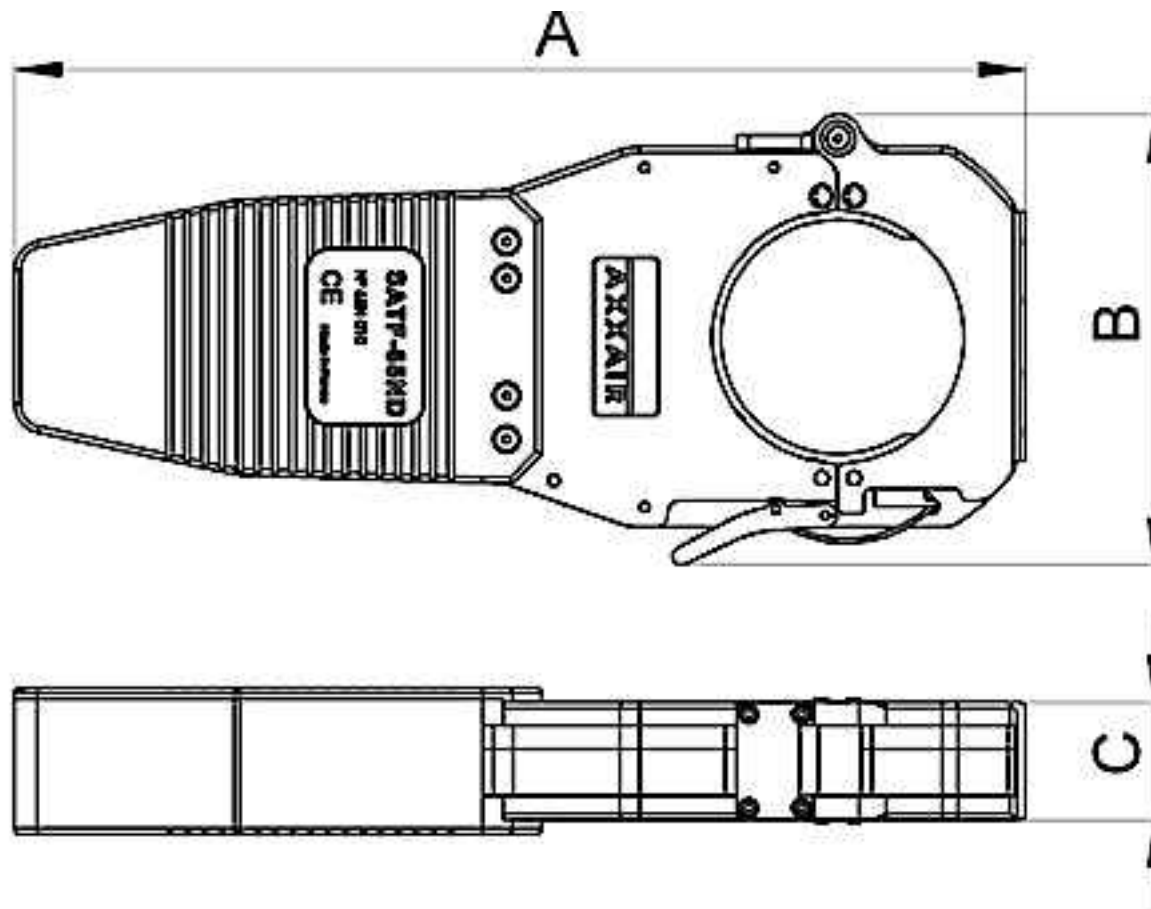
Tube-Union configuration :



- tube side : standard jaws
- union side : special jaws



For any other special setup, please contact us. We will design the required special solution

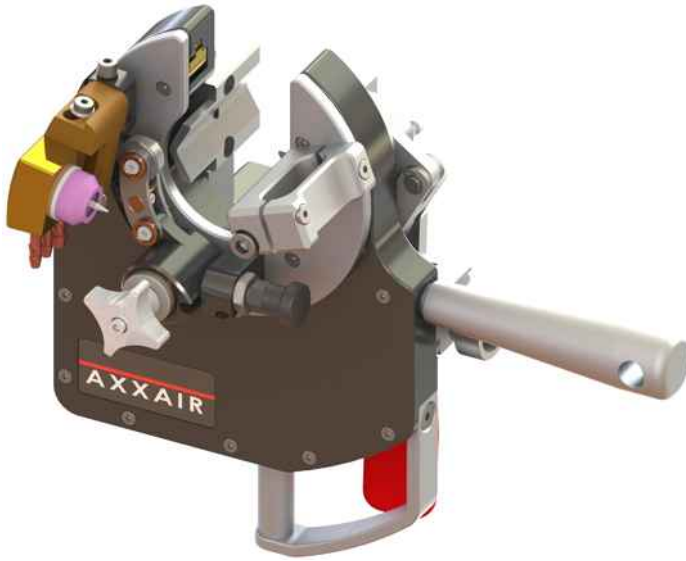




	A mm	B mm	C mm	Ø min	Ø max		
SATF-40ND	316	124	40	6 mm	40 mm	8,8 kg	< 70 dB
SATF-65ND	346	154	40	6 mm	65 mm	9,2 kg	< 70 dB
SATF-115ND	401	218	40	25 mm	115 mm	9,9 kg	< 70 dB

	A mm	B mm	C mm	Ø min	Ø max		
SATF-40MI	316	124	40	6 mm	40 mm	8,8 kg	< 70 dB
SATF-65MI	346	154	40	6 mm	65 mm	9,2 kg	< 70 dB
SATF-115MI	401	218	40	25 mm	115 mm	9,9 kg	< 70 dB





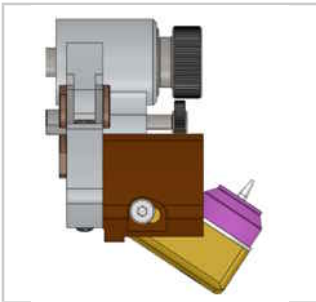
∅10 - ∅40 mm

∅0,4" - ∅1,7"

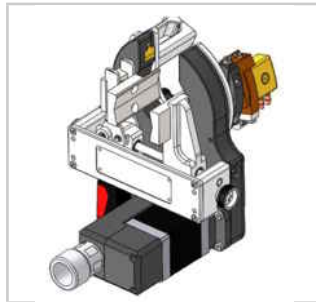
- Water cooled welding torch
- **Mechanical Roll tracking: insures electrode distance without marking the tube**
- Symmetrical quick clamping through lever
- Motor with encoder : allows for tungsten electrode start-up at all angles and a wide range of diameters
- Axial adjustment of the electrode
- Low rotating free space around the tube: **70 mm** radius from center of tube

Weight: 3,8Kg / 7 lbs (without cables)

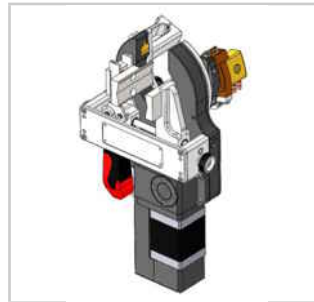
- Very compact design
- Two motor positions available



Torch angle adjustment: welding under flange or short T angle



SATO-xxxE01: Straight motor
Symmetrical clamping



SATO-xxxE02 : Angle transmission motor
Symmetrical clamping



Mechanical roll tracking: Constant arc voltage and roll tracking avoiding marking the tubes

References	Accessories	Consumables
SATO-40E01	SAFS-210 : Wire harness extension 10 M Except with AVC/OSC/ WIRE	
	SKIB-01: gas protection kit - plugs ∅6 to 41 mm	
SATO-40E02	SKIF-01: gas protection kit - membranes ∅40 to 120 mm	SCE16-50 : ∅ 1,6 mm
	SATOB-02B : Wire guide two axis for SATO	SCE24-50 : ∅ 2,4 mm
	SKTO-01 : Exchange kit for open head torch diam 1.6 and 2.4mm	
	SADF-2: wire feeder for SP and SATO (without wire spool)	





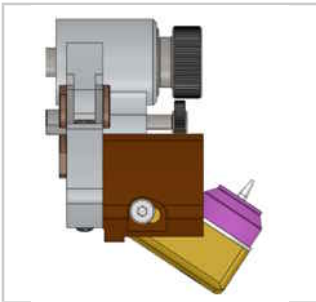
∅19 - ∅80 mm

∅0,75" - ∅3"

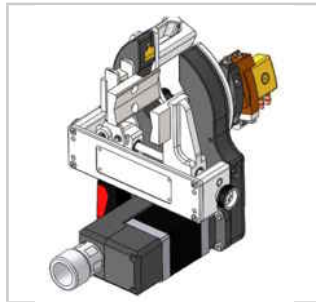
- **Water cooled welding torch**
- Mechanical Roll tracking: insures electrode distance without marking the tube
- Symmetrical quick clamping through lever
- Motor with encoder : allows for tungsten electrode start-up at all angles and a wide range of diameters
- Axial adjustment of the electrode
- Low rotating free space around the tube: **90 mm** radius from center of tube

Weight: 4,2 Kg / 7 lbs (without cables)

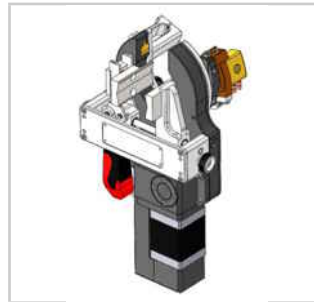
Very compact design
Two motor positions available



Torch angle adjustment: welding under flange or short T angle



SATO-xxxE01: Straight motor
Symmetrical clamping



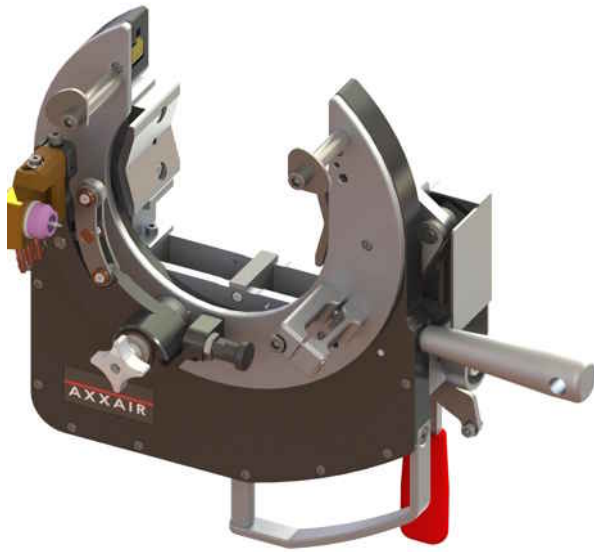
SATO-xxxE02 : Angle transmission motor
Symmetrical clamping



Mechanical roll tracking: Constant arc voltage and roll tracking avoiding marking the tubes

References	Accessories	Consumables
SATO-80E01	SAFS-210 : Wire harness extension 10 M Except with AVC/OSC/ WIRE	
	SKIB-01: gas protection kit - plugs ∅6 to 41 mm	
	SKIF-01: gas protection kit - membranes ∅40 to 120 mm	SCE16-50 : ∅ 1,6 mm
SATO-80E02	SATOB-02B : Wire guide two axis for SATO	SCE24-50 : ∅ 2,4 mm
	SKTO-01 : Exchange kit for open head torch diam 1.6 and 2.4mm	
	SADF-2: wire feeder for SP and SATO (without wire spool)	





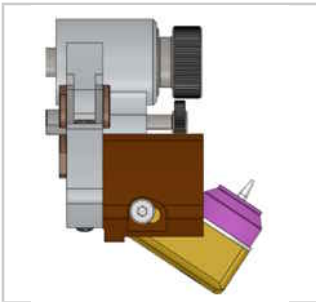
Ø19 - Ø115 mm

Ø0,75" - Ø4,5"

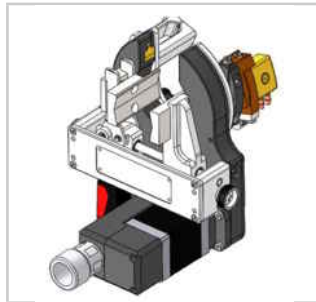
- Water cooled welding torch
- **Mechanical Roll tracking: insures electrode distance without marking the tube**
- Symmetrical quick clamping through lever
- Motor with encoder : allows for tungsten electrode start-up at all angles and a wide range of diameters
- Axial adjustment of the electrode
- Low rotating free space around the tube: **112 mm** radius from center of tube

Weight: 6,7 Kg / 15 lbs (without cables)

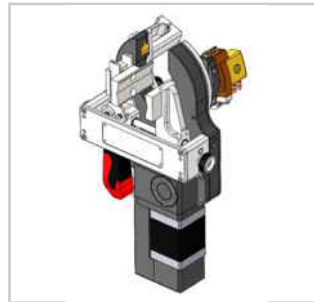
Very compact design
Two motor positions available



Torch angle adjustment: welding under flange or short T angle



SATO-xxxE01: Straight motor
Symmetrical clamping



SATO-xxxE02 : Angle transmission motor
Symmetrical clamping



Mechanical roll tracking: Constant arc voltage and roll tracking avoiding marking the tubes

References	Accessories	Consumables
SATO-115E01	SAFS-210 : Wire harness extension 10 M Except with AVC/OSC/ WIRE	
	SKIB-01: gas protection kit - plugs Ø6 to 41 mm	
SATO-115E02	SKIF-01: gas protection kit - membranes Ø40 to 120 mm	SCE16-50 : Ø 1,6 mm
	SATOB-02B : Wire guide two axis for SATO	SCE24-50 : Ø 2,4 mm
	SKTO-01 : Exchange kit for open head torch diam 1.6 and 2.4mm	
	SADF-2: wire feeder for SP and SATO (without wire spool)	





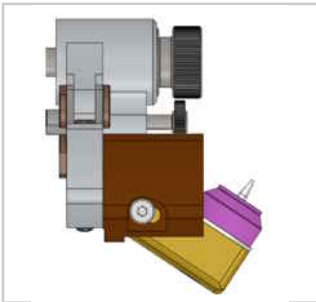
Ø25 - Ø170 mm

Ø1" - Ø6,625"

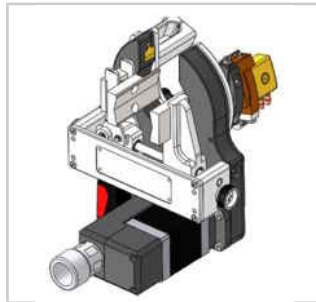
- Water cooled welding torch
- **Mechanical Roll tracking: insures electrode distance without marking the tube**
- Symmetrical quick clamping through lever
- Motor with encoder : allows for tungsten electrode start-up at all angles and a wide range of diameters
- Axial adjustment of the electrode
- Low rotating free space around the tube: **147 mm** radius from center of tube

Weight: 8 Kg / 18 lbs (without cables)

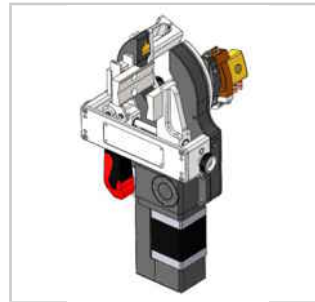
Very compact design
Two motor positions available



Torch angle adjustment: welding under flange or short T angle



SATO-xxxE01: Straight motor
Symmetrical clamping



SATO-xxxE02 : Angle transmission motor
Symmetrical clamping



Mechanical roll tracking: Constant arc voltage and roll tracking avoiding marking the tubes

References	Accessories	Consumables
SATO-170E01	SAFS-210 : Wire harness extension 10 M Except with AVC/OSC/ WIRE	
	SKIB-01: gas protection kit - plugs Ø6 to 41 mm	
SATO-170E02	SKIF-01: gas protection kit - membranes Ø40 to 120 mm	SCE16-50 : Ø 1,6 mm
	SATOB-02B : Wire guide two axis for SATO	SCE24-50 : Ø 2,4 mm
	SKTO-01 : Exchange kit for open head torch diam 1.6 and 2.4mm	
	SADF-2: wire feeder for SP and SATO (without wire spool)	





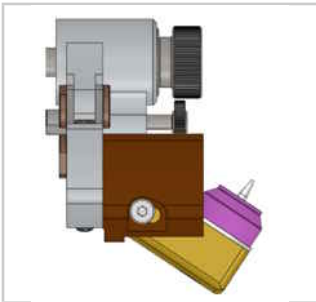
∅38 - ∅220 mm

∅1,5" - ∅8,625"

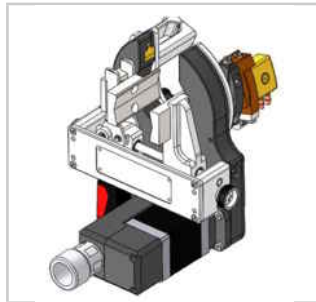
- Water cooled welding torch
- **Mechanical Roll tracking: insures electrode distance without marking the tube**
- Symmetrical quick clamping through lever
- Motor with encoder : allows for tungsten electrode start-up at all angles and a wide range of diameters
- Axial adjustment of the electrode
- Low rotating free space around the tube: **175 mm** radius from center of tube

Weight: 9,4 Kg / 22 lbs (without cables)

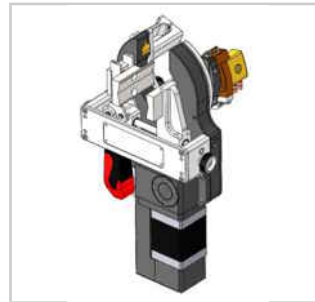
Very compact design
Two motor positions available



Torch angle adjustment: welding under flange or short T angle



SATO-xxxE01: Straight motor
Symmetrical clamping



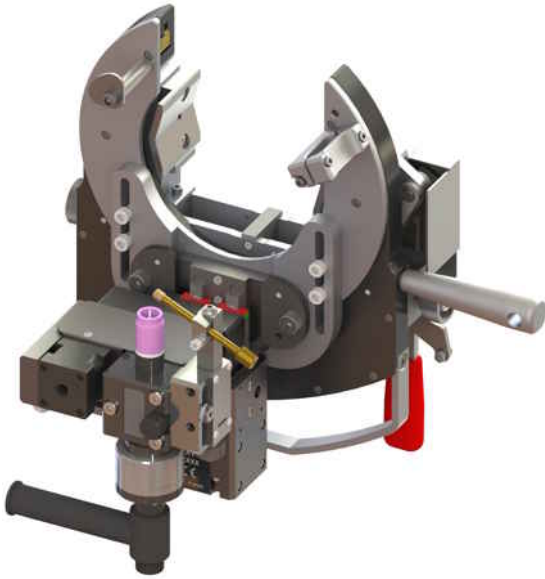
SATO-xxxE02 : Angle transmission motor
Symmetrical clamping



Mechanical roll tracking: Constant arc voltage and roll tracking avoiding marking the tubes

References	Accessories	Consumables
SATO-220E01	SAFS-210 : Wire harness extension 10 M Except with AVC/OSC/ WIRE	
	SKIB-01: gas protection kit - plugs ∅6 to 41 mm	
SATO-220E02	SKIF-01: gas protection kit - membranes ∅40 to 120 mm	SCE16-50 : ∅ 1,6 mm
	SATOB-02B : Wire guide two axis for SATO	SCE24-50 : ∅ 2,4 mm
	SKTO-01 : Exchange kit for open head torch diam 1.6 and 2.4mm	
	SADF-2: wire feeder for SP and SATO (without wire spool)	





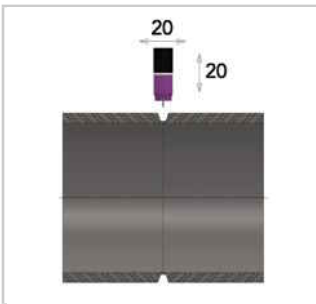
Ø19 - Ø115 mm

Ø0,75" - Ø4,5"

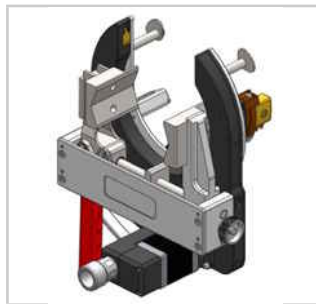
- Ideal for Multi-pass welding up to 12,7 mm thickness
- AVC regulation of the position of the electrode (20 mm stroke)
- Oscillation OSC capacity: 20 mm stroke
- Symmetrical quick clamping through lever
- Motor with encoder : allows for tungsten electrode start-up at all angles and a wide range of diameters
- Axial adjustment of the electrode
- Low rotating free space around the tube: 112 mm radius from center of tube
- Compatible with AVC/OSC module upgrade

Weight: 10,6 Kg / 23 lbs (without cables)

Very compact design
Two motor positions available



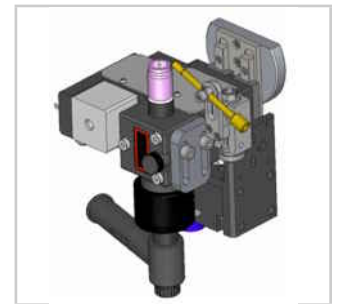
Oscillation stroke :20mm
AVC stroke : 20 mm
Max speed: 15mm/s



SATO-xxxE31: Straight motor
Symmetrical clamping



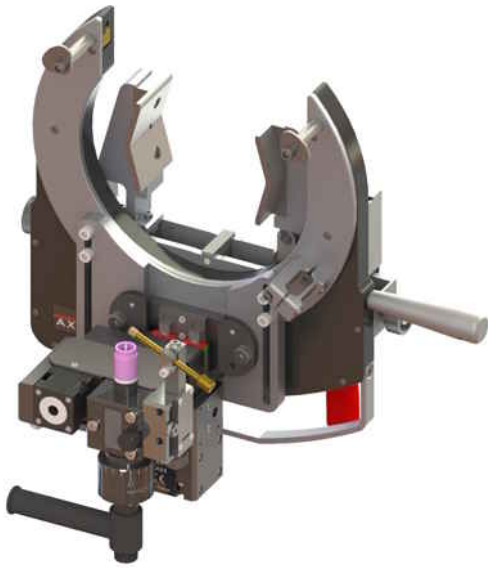
SATO-xxxE32 : Angle transmission motor
Symmetrical clamping



SOAF: AVC/OSC module

References	Accessories	Consumables
SATO-115E31 SATO-115E32	SAFS-310 : Wire harness extension 10 M SKIB-01: gas protection kit - plugs Ø6 to 41 mm SKIF-01: gas protection kit - membranes Ø40 to 120 mm	SCE16-50 : Ø 1,6 mm SCE24-50 : Ø 2,4 mm





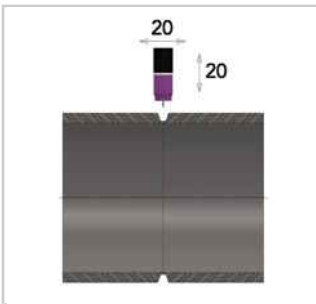
∅25 - ∅170 mm

∅1" - ∅6,625"

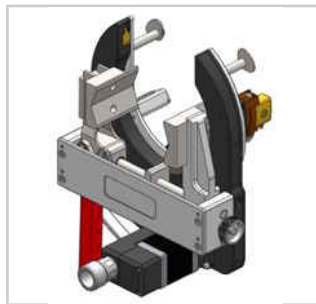
- Ideal for Multi-pass welding up to 12,7 mm thickness
- AVC regulation of the position of the electrode (20 mm stroke)
- Oscillation OSC capacity: 20 mm stroke
- Symmetrical quick clamping through lever
- Motor with encoder : allows for tungsten electrode start-up at all angles and a wide range of diameters
- Axial adjustment of the electrode
- Rotating free space around the tube: 147 mm radius from center of tube
- Compatible with AVC/OSC module upgrade

Weight: 12,7 kg / 27 lbs (without cables)

Very compact design
Two motor positions available



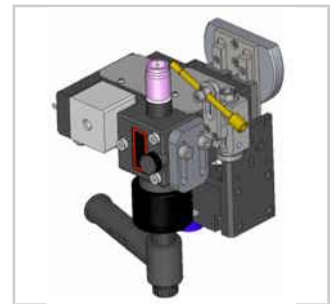
Oscillation stroke :20mm
AVC stroke : 20 mm
Max speed: 15mm/s



SATO-xxxE31: Straight motor
Symmetrical clamping



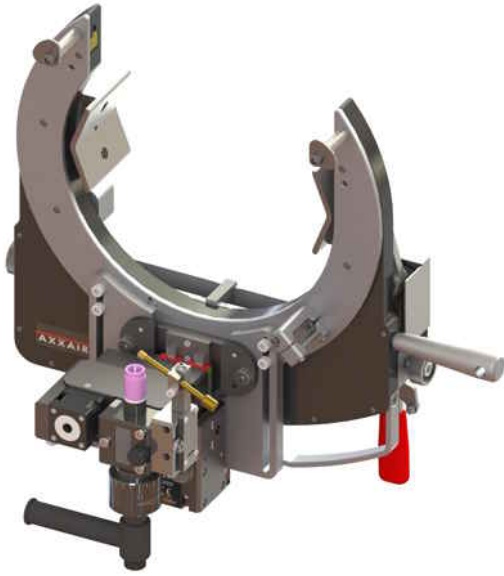
SATO-xxxE32 : Angle transmission motor
Symmetrical clamping



SOAF: AVC/OSC module

References	Accessories	Consumables
SATO-170E31 SATO-170E32	SAFS-310 : Wire harness extension 10 M SKIB-01: gas protection kit - plugs ∅6 to 41 mm SKIF-01: gas protection kit - membranes ∅40 to 120 mm	SCE16-50 : ∅ 1,6 mm SCE24-50 : ∅ 2,4 mm





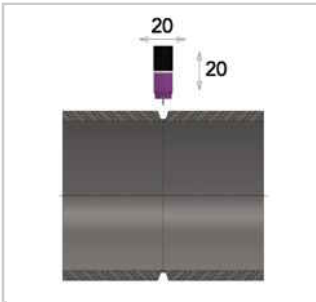
Ø38 - Ø220 mm

Ø1,5" - Ø8,625"

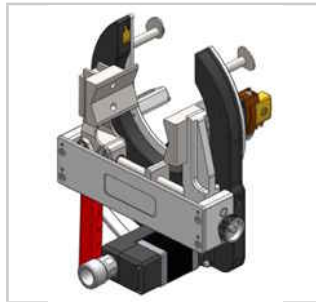
- Ideal for Multi-pass welding up to 12,7 mm thickness
- AVC regulation of the position of the electrode (20 mm stroke)
- Oscillation OSC capacity: 20 mm stroke
- Symmetrical quick clamping through lever
- Motor with encoder : allows for tungsten electrode start-up at all angles and a wide range of diameters
- Axial adjustment of the electrode
- Low rotating free space around the tube: 175 mm radius from center of tube
- Compatible with AVC/OSC module upgrade

Weight: 15,1Kg / 33 lbs (without cables)

Very compact design
Two motor positions available



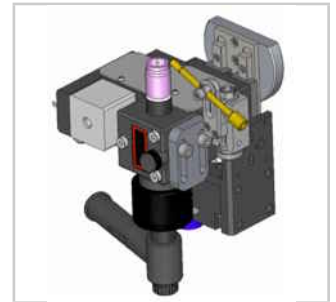
Oscillation stroke :20mm
AVC stroke : 20 mm
Max speed: 15mm/s



SATO-xxxE31: Straight motor
Symmetrical clamping



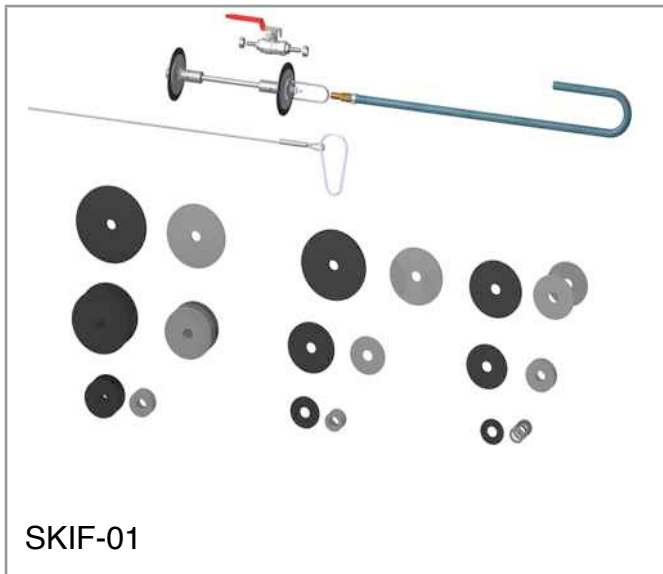
SATO-xxxE32 : Angle transmission motor
Symmetrical clamping



SOAF: AVC/OSC module

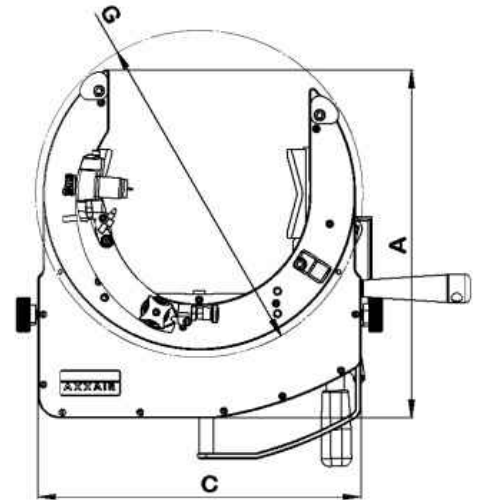
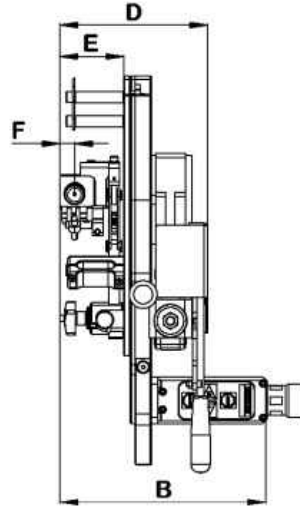
References	Accessories	Consumables
SATO-220E31 SATO-220E32	SAFS-310 : Wire harness extension 10 M SKIB-01: gas protection kit - plugs Ø6 to 41 mm SKIF-01: gas protection kit - membranes Ø40 to 120 mm	SCE16-50 : Ø 1,6 mm SCE24-50 : Ø 2,4 mm



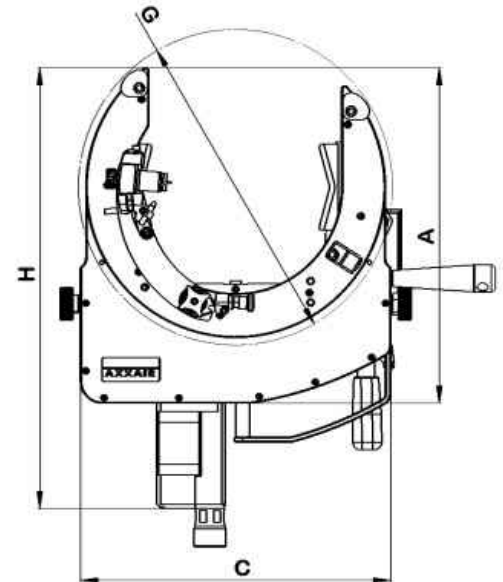
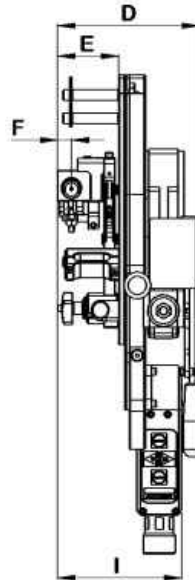


Accessories	Options
<p>VAL-CO05 : Protection case for shipping and storage for all SATO-xxx-E0x except SATO-220E0x</p> <p>VAL-CO06 : Protection case for shipping and storage for all SATO-xxx-E3x and SATO-220E0x</p> <p>SKIB-01: gas protection kit - plugs Ø 6 to 41 mm</p> <p>SKIF-01: gas protection kit - membranes Ø 40 to 120 mm</p> <p>SKTD-01 : Exchange kit straight torch diameter 1.6mm</p> <p>SKTD-02 : Exchange kit straight torch diameter 2.4, mm</p> <p>SKTO-01 : Exchange kit for open head torch diam 1.6 and 2.4mm (SATO-xxxE0x)</p>	<p>SADF-2: wire feeder for SP and SATO (without wire spool)</p> <p>SATOB-02B : Wire guide two axis for SATO</p> <p>SAFS-210 : Wire harness extension 10 M Except with AVC/OSC/ WIRE</p> <p>SAFS-310 : extension bundle 10m for SATO-xxxE3x (AVC-OSC- WIRE)</p>

SATO-xxxE01



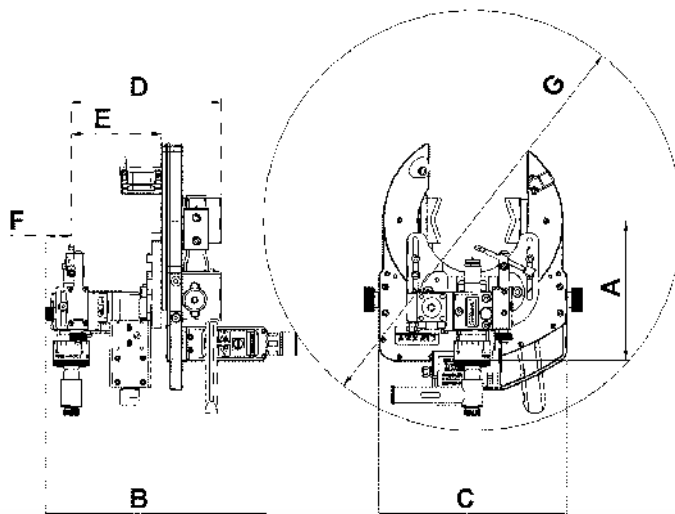
SATO-xxxE02



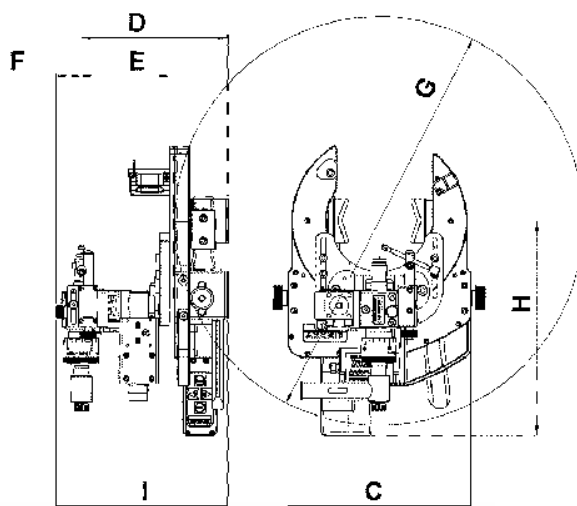
	OD Min mm	OD Max mm	A mm	B mm	C mm	D mm	E mm	F mm	G mm	H mm	I mm
SATO-40	6,0	40,0	169	183 - 191	142	116 - 126	57 - 67	13	Ø140	270	113 - 121
SATO-80	19,0	80,0	181	186 - 196	160	116 - 126	57 - 67	13	Ø180	279	113 - 121
SATO-115	19,0	115,0	265	186 - 196	230	133 - 143	57 - 67	13	Ø224	363	113 - 121
SATO-170	25,0	170,0	312	186 - 196	290	133 - 143	57 - 67	13	Ø294	410	113 - 121
SATO-220	38,0	220,0	353	186 - 196	350	133 - 143	57-à 67	13	Ø350	451	113 - 121



SATO-xxxE31



SATO-xxxE32



	OD Min mm	OD Max mm	A mm	B mm	C mm	D mm	E mm	F mm	G mm	H mm	I mm
SATO-115E3X	19.0	115.0	171	246-271	230	146-171	85-110	31.5	680	269	194-219
SATO-170E3X	25.0	170.0	201	246-271	290	146-171	85-110	31.5	750	299	194-219
SATO-220E3X	38.0	220.0	220	246-271	350	146-171	85-110	31.5	800	318	194-219

