

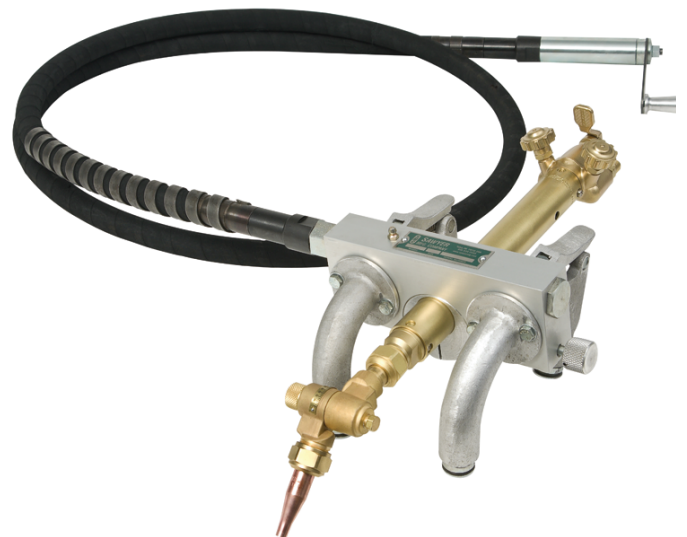
BAND-TYPE BEVELING MACHINES

One Bevel Transmission Operates On All Size Bands

- For pipe 6" (152.4mm) and larger
- Bands are made from durable stainless steel for long life
- Adaptable to any beveling requirement
- Smoothly, accurately cuts and bevels
- Flexible 9' (2.7m) drive shaft, standard; 14' (4.3m) optional
- Motorized drive optional
- Minimum clearance needed in bell holes
- Fully adjustable cutting head angle
- Out-round pipe attachments unnecessary
- Precision cast for more rugged strength
- Mounts easily anywhere on the pipe
- Above 60" (1524mm) - special order



Beveling Transmission Bands



Manual transmission with torch

Products sold separately



SAWYER MFG COMPANY

1031 N. Columbia Place • Tulsa, Oklahoma 74110 U.S.A.

Phone: (918) 834-2550 • Fax: (918) 834-0318

E-Mail: info@sawyerfmfg.com

Web Site: www.sawyerfmfg.com

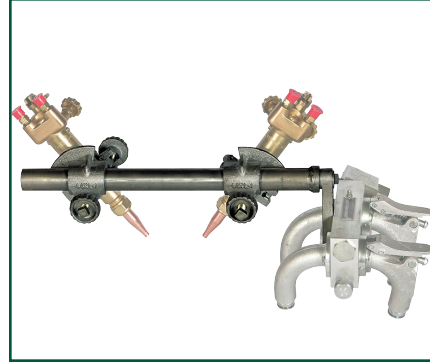
**Sawyer products are sold exclusively through distributors in the U.S. and abroad.
Please contact us for the name of your nearest distributor.**

BAND-TYPE BEVELING MACHINES ACCESSORIES



Manual Transmission w/Torch

Model 206-9 and Model 206-14. Standard Band-Type Beveling Machine with 9' or 14' (2.7m - 4.3m) transmission drive shaft.



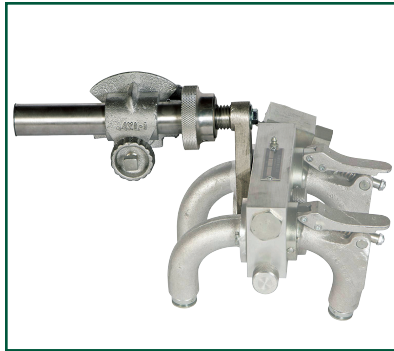
Double Cut Torch Holder

Model 283D. Double Cut Torch Holder fits any Sawyer Band-Type Beveling Machine. Allows machine to bevel on both sides of a cut.



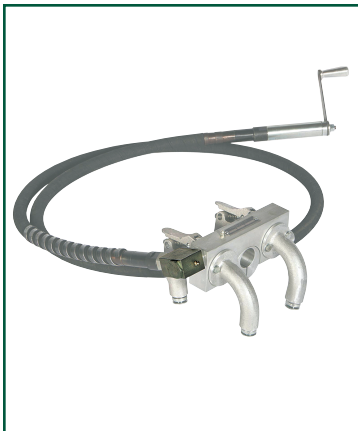
Motorized Transmission

Model 206F-110, Model 206F-220 and Model 206F-90DC. Motorized Band-Type Beveling Machine with A.C. or D.C. motorized transmission.



Adjustable Torch Holder

Model 284D. Adjustable Torch Holder fits any Sawyer Band-Type Beveling Machine. Torch sold separately.



Right Angle Drive

Model 206E. Right Angle Drive Kit for Beveling Transmission. Special swivel feature on drive shaft facilitates work in tight areas, enabling machine to be operated from the left or right side or from above or below.



Carrying Case

Sturdy galvanized steel Carrying Case for Sawyer bands and transmissions.

* Cutting torches shown for illustration purposes only; available as optional equipment.

SPECIFICATIONS

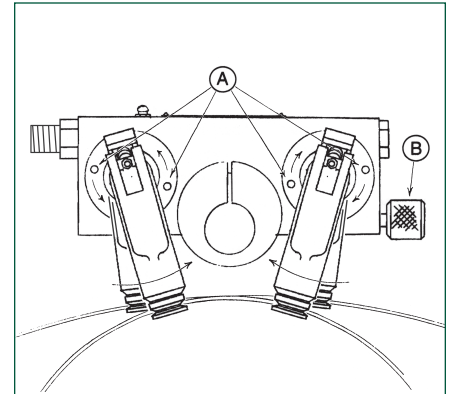
Sawyer Transmissions

DESCRIPTION	WEIGHT	
	LB.	KG.
Standard Model 206A-9	21	9.5
Standard Model 206A-14	23	10.4
Motorized Model 206B-110	17	7.7
Motorized Model 206B-220	24	10.9
Motorized Model 206B-90DC	18	8.2
Rt. Angle Drive Model 206B-RA-9	22	10

Transmission Accessories

DESCRIPTION	WEIGHT	
	LB.	KG.
Motorizing Kit-110VAC Model 206F-110	7	3.2
Motorizing Kit-220VAC Model 206F-220	7	3.2
Motorizing Kit- 90 VDC Model 206F-90DC	4	1.8
Double Cut Torch Holder Model 283D	3	1.4
Adjustable Cut Torch Holder Model 284D	4	1.8

Operating Instructions



To adjust for Band radius --

1. Loosen cap screws "A" one or two turns.
2. Swing front and rear pairs of legs inward or outward to match band radius.
3. Snug up cap screws "A".
These should not be tightened down hard enough to interfere with the ball leg hinging action.

To adjust Torch Holder --

1. Loosen set screw "B".
2. Rotate eccentric torchholder to desired clearance.
3. Tighten set screw "B" -- hand tight.

Maintenance --

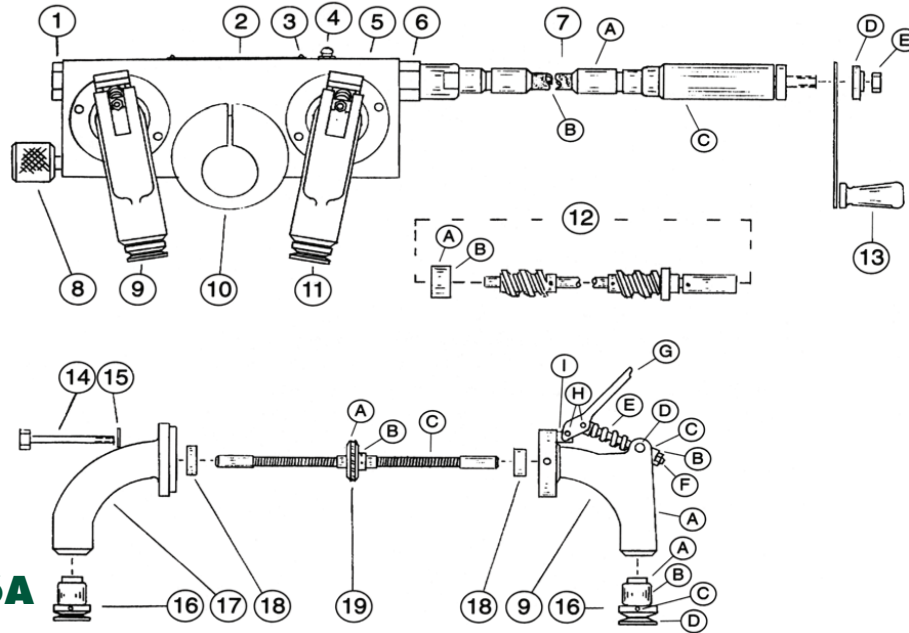
Occasionally use ice pick or pocketknife to scrape out accumulation in wheel grooves, to assure good crawler wheel/ band contact.

Beveling Bands

MODEL # - SIZE (Inch)	SIZE		WEIGHT	
	IN.	MM.	LB.	KG.
206C - 6	6	152.4	6	2.7
206C - 8	8	203.2	8	3.6
206C - 10	10	254.0	10	4.5
206D - 12	12	304.8	12	5.4
206D - 14	14	355.6	14	6.4
206D - 16	16	406.4	16	7.3
206D - 18	18	457.2	18	8.2
206D - 20	20	508.0	20	9.1
206D - 22	22	558.8	22	10.0
206D - 24	24	609.6	24	10.9
206D - 26	26	660.4	26	11.8
206D - 28	28	711.2	28	12.7
206D - 30	30	762.0	30	13.6
206D - 32	32	812.8	32	14.5
206D - 34	34	863.6	34	15.4
206D - 36	36	914.4	36	16.3
206D - 38	38	965.2	38	17.2
206D - 40	40	1016.0	40	18.1
206D - 42	42	1066.8	42	19.1
206D - 44	44	1117.6	44	20.0
206D - 46	46	1168.4	46	20.9
206D - 48	48	1219.2	48	21.8
206D - 50	50	1270.0	50	22.7
206D - 52	52	1320.8	52	23.6
206D - 54	54	1371.6	54	24.5
206D - 56	56	1422.4	56	25.4
206D - 58	58	1473.2	58	26.3
206D - 60	60	1524.0	60	27.2

SPECIAL & LARGER SIZES AVAILABLE BY SPECIAL ORDER *Specifications subject to change without notice

BEVELING TRANSMISSION PARTS LIST



Model 206A Parts List

No.	Description/Name	Part No.	Amount	No.	Description/Name	Part No.	Amount
1	End Plug	32G-1	1	9i	Latch Pin- Short	38C-1	1
2	Name Plate	55G	1	9j	Hex Jam (Not Shown)	517-32	1
3	Drive Screw	515-3	2	10	Torch Holder	94A-1	1
4	Grease Fitting	518-1	1	11	Ball Leg Assy-Front	4DD-2	1
5	Body	11K	1	12	Worm Shaft Assy.	4DA	2
6	Connector	93B-1	1	12a	Bearing Housing- Rear	56N	1
7	Main Flex Drive Shaft Assy.	29CA	1	12b	Bearing	505-21	1
7a	Outer Housing Assy.	29CA-1	1	13	Crank Handle Assy.	4DE	1
7b	Inner Core Assy.	29CA-2	1	14	Cap Screw	519-13	4
7c	Hand Piece	29CA-3	1	15	Washer	502-29	4
7d	Washer	29CA-6	1	16	Drive Wheel Assy.	4DB	4
7e	Nut	29CA-7	1	16a	Bearing Race	79C-1	1
8	Set Screw Assy.	4DF	1	16b	Bearing	505-19	1
9	Rear Leg Assy. Complete	4DD-1	1	16c	Pin	522-6	1
9a	Ball Leg Assy-Rear	4FL-R	1	16d	Wheel	64N-1	1
	Latch Sub Assy (Incl 9b - 9j)	4FH	1	17	Flanged Leg- Rear	96A-2	1
9b	Nut	517-6	1	18	Worm Gear Shaft Bearing	505-20	4
9c	Spacer	30R-1	1	19	Worm Gear Shaft Assy.	4DC	2
9d	Pivot Pin	35AG	1	19a	Worm Gear	37-AF	1
9e	Spring	51AO	1	19b	Set Screw	515-4	2
9f	Latch Pin- Long	38D-1	1	19c	Flex Shaft	29CK	1
9g	Latch Handle	33H-1	1	20	Flanged Leg- Front (not shown)	96A-1	1
9h	Rivet	523-2	2	21	Lubricant (not shown)	521-1	8oz



SAWYER MFG COMPANY

1031 N. Columbia Place • Tulsa, Oklahoma 74110 U.S.A.

Phone: (918) 834-2550 • Fax: (918) 834-0318

E-Mail: info@sawyerfmfg.com

Web Site: www.sawyerfmfg.com

**Sawyer products are sold exclusively through distributors in the U.S. and abroad.
Please contact us for the name of your nearest distributor.**