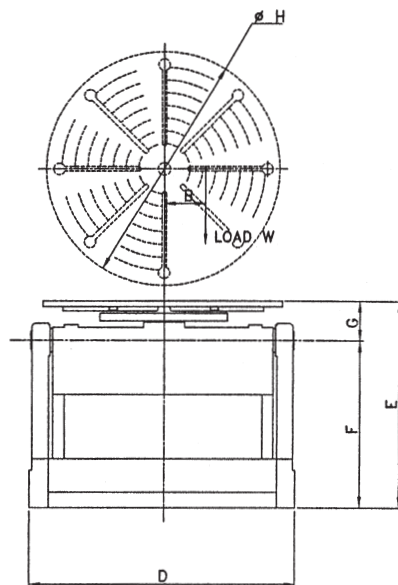
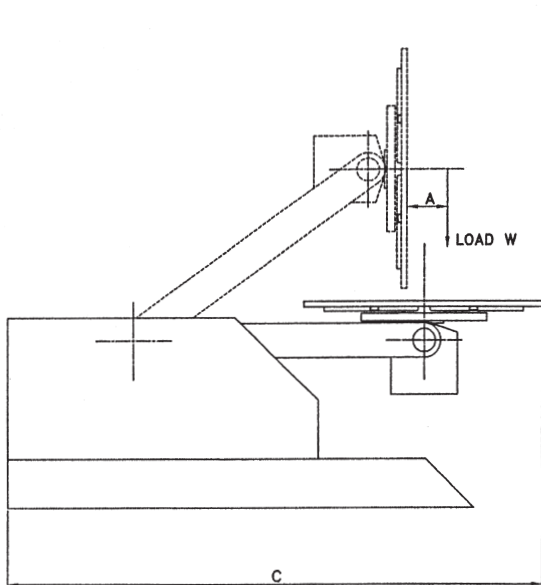




HYDRAULIC ELEVATING POSITIONERS MODEL VP/HR	20 VP/HR	60. VP/HR	100. VP/HR	150. VP/HR
HYDRAULIC TABLE TILTING HYDRAULIC TABLE ELEVATION MOTORIZED TABLE ROTATION				
Capacity 'W' (kg)	1000	3000	5000	7500
Eccentricity 'B' (mm)	150	150	150	150
Centre of Gravity 'A' (mm)	200	150	150	300
Height – Max. (mm) – Min. (mm)	1570 850	1473 838	1800 960	2286 1143
Rotation Speed (Inverter) (rpm) (min-max)	0.07 – 1.4	0.05 – 1.0	0.05 – 1.0	0.05 – 1.0
Degree of Tilt – Elevated – Lowered	100 135	100 108	100 108	97 108
Overall Length 'C' (mm)	1865	2800	3200	3500
Overall Width 'D' (mm)	1050	1700	1700	2000
Table Diameter 'H' (mm)	920	1220	1525	1525
Supply	3 Phase +N 50 Hz 415 V – 15 A 380 V – 16 A	3 Phase +N 50 Hz 415 V – 15 A 380 V – 16 A	3 Phase +N 50 Hz 415 V – 25 A 380 V – 27 A	3 Phase +N 50 Hz 415 V – 26 A 380 V – 28 A
Machine Weight (Nett) (kg) Approx	1,500	2,500	3,000	4,500



F. Bode & Sons Limited

Unit No.1, Stubbins Lane
Claughton-on-Brock

GB-Preston, Lancs PR3 0QH

Tel.: +44 (0) 1995 643 210

Fax: +44 (0) 1995 643 211

E-mail - sales@bode.co.uk

Visit our web site - www.bode.co.uk

Get in touch today to discuss your production needs and let BODE meet your needs in full.

