



# INSPECTION REPORT

QR8.2.3-06-408 Ver A

## FACTORY INSPECTION REPORT EQUIPMENT ACCEPTANCE DOCUMENTS

JOB NAME: D1512180

CONTRACT NO: ZF15-203

EQUIPMENT: Girth Welder

MODEL: AGW-I/P

COMPILER: Fang Jianfeng

PREPARED BY: QC DEPT:

Pan Lingfang - Quality testing department expert

DATE: 2016-01-05

Westermans International Ltd  
Unit 4, Midland Distribution Centre, Markfield Road, Groby, Leicester LE6 0FS, UK  
www.westermans.com      welding@westermans.com      T:+44(0) 1162 696941

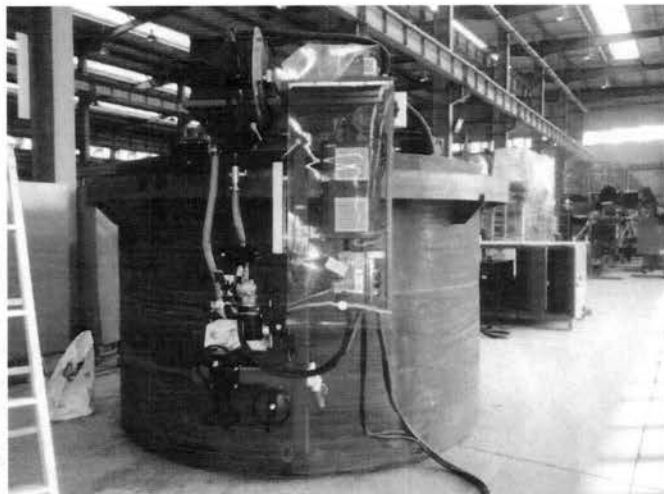


Westermans International Ltd  
together we weld the world...

## INSPECTION REPORT

QR8.2.3-06-408 Ver A

### PRODUCT DESCRIPTION

**Product Name:**

Girth Welder

**Model:**

AGW-I/P

**Inspection date:**

2016-01-05

**Inspection quantity:**

2

**Serial # :**

D1512180-01/D1512180-02

**OVERALL INSPECTION RESULT:**

**Passed**

Result	Findings/Remarks
<b>Most serious defects found: No found</b>	
<b>TESTS</b>	<b>Passed</b>
QUANTITY	OK
PRODUCT COLOR	OK
STYLE / CONSTRUCTION	OK
PRODUCT DIMENSIONS	OK
ARTWORKS / LABELS	OK

Westermans International Ltd  
Unit 4, Midland Distribution Centre, Markfield Road, Groby, Leicester LE6 0FS, UK  
www.westermans.com      welding@westermans.com      T:+44(0) 1162 696941





Westermans International Ltd  
together we weld the world...

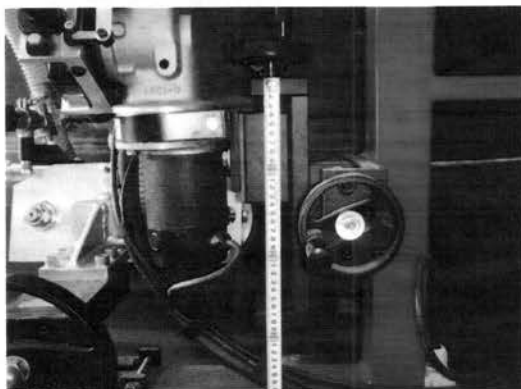
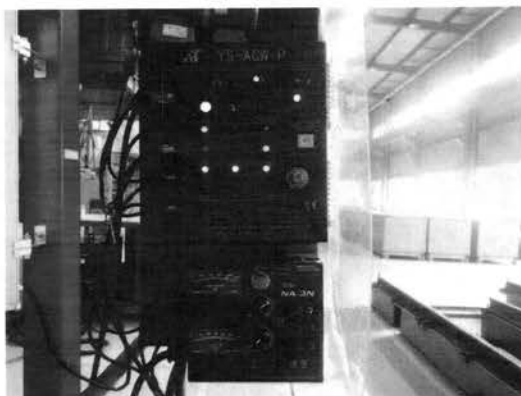
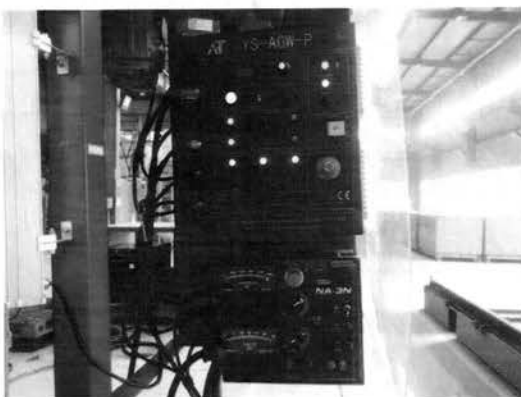
# INSPECTION REPORT

QR8.2.3-06-408 Ver A

Westermans International Ltd  
Unit 4, Midland Distribution Centre, Markfield Road, Groby, Leicester LE6 0FS, UK  
www.westermans.com      welding@westermans.com      T:+44(0) 1162 696941

Tank Diameter	≥3.0m	OK
Max Load Capability	100kg	OK
Input Power	240V/380V/460V/3PH/50HZ	OK

## Pictures:



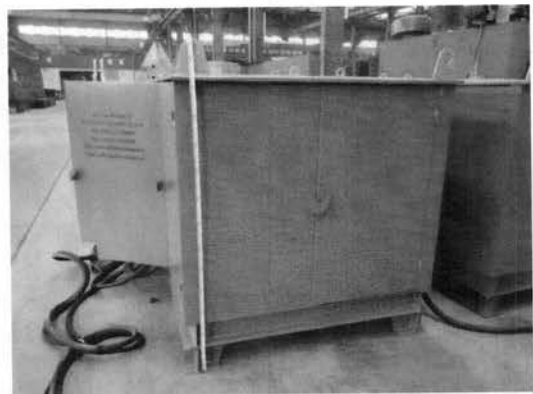
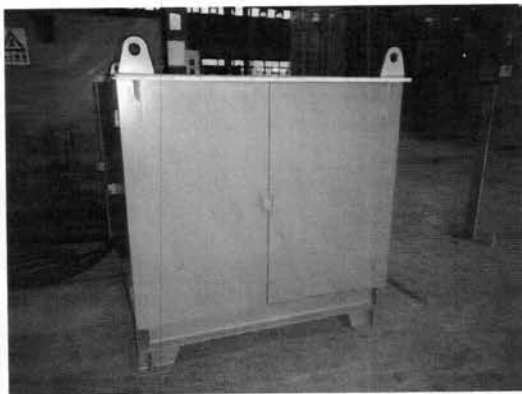
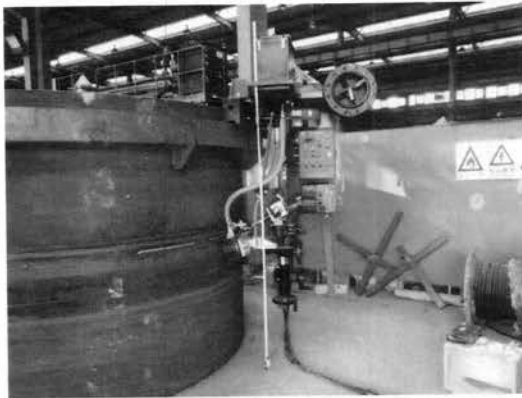
Address: No.475 Haidian Road, Fengcheng Economic Zone, Fengxian Distrect, Shanghai , China  
Postal Code: 201411 Tel: 86-21-5752 0668 Fax: 86-21-5752 0568 E-mail : info@all-time.com.cn



Westermans International Ltd  
together we weld the world...

# INSPECTION REPORT

QR8.2.3-06-408 Ver A



Westermans International Ltd

Unit 4, Midland Distribution Centre, Markfield Road, Groby, Leicester LE6 0FS, UK

[www.westermans.com](http://www.westermans.com)

[welding@westermans.com](mailto:welding@westermans.com)

T:+44(0) 1162 696941





Westermans International Ltd  
together we weld the world...

# INSPECTION REPORT

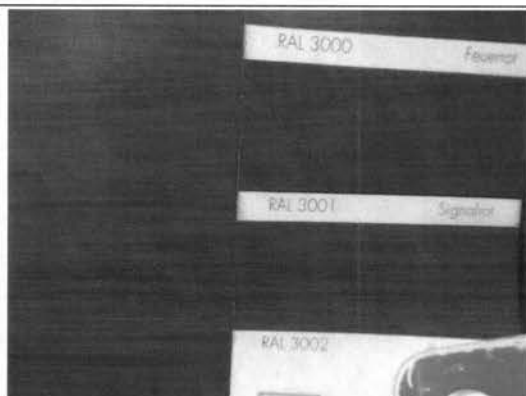
QR8.2.3-06-408 Ver A

## QUALITY CRITERIA

### 1. Colours

Expected Result	Result	RAL code	Comments
see attached file	OK	GSB05-1426-2001/RAL3002	Please refer to the pictures as below

#### Pictures:



The color closed to RAL3002(AGW-I/P)



The color closed to GSB05-1426-2001  
(Electrical cabinet)

### 2. Style / Construction

Expected Result	Result	Actual Finding / Comments
see attached file	OK	Please refer to the pictures as below

#### Pictures:



AGW-I/P



Name plate(D1512180-01)



Westermans International Ltd  
together we weld the world...

# INSPECTION REPORT

QR8.2.3-06-408 Ver A



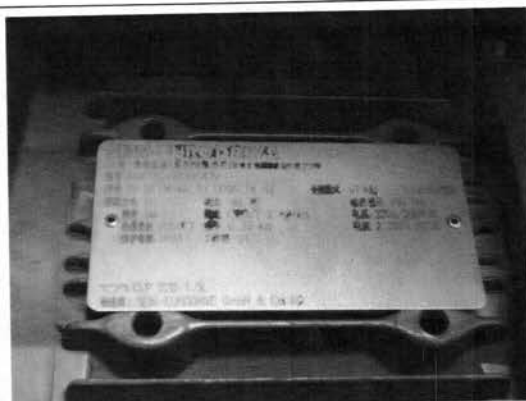
Name plate(D1512180-02)



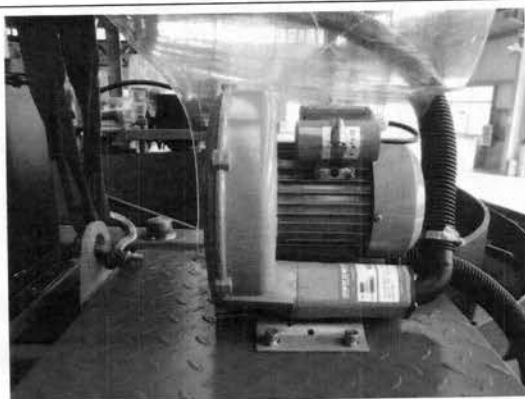
Motor drive



Product mark



Product mark



Flux vacuum blower



Product mark(D1512180-01)





Westermans International Ltd  
together we weld the world...

# INSPECTION REPORT

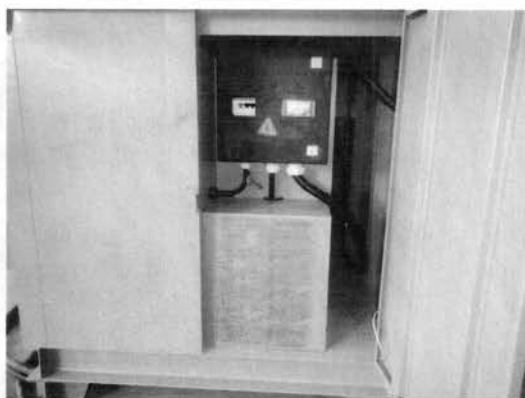
QR8.2.3-06-408 Ver A



Product mark(D1512180-02)



Power source storage



Electrical cabinet



Inner



LINCOLN DC1000 power supply





Westermans International Ltd  
together we weld the world...

# INSPECTION REPORT

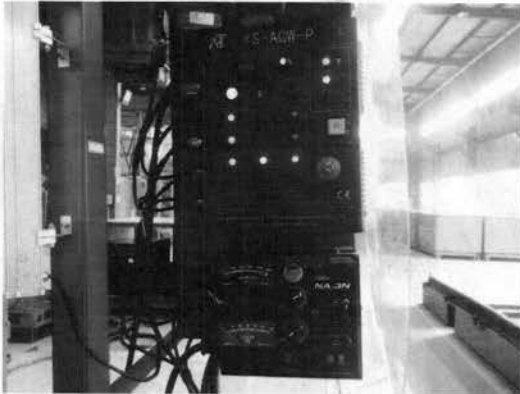
QR8.2.3-06-408 Ver A



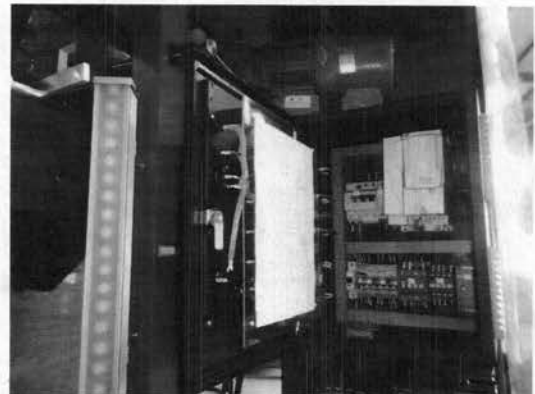
Product mark(D1512180-01)



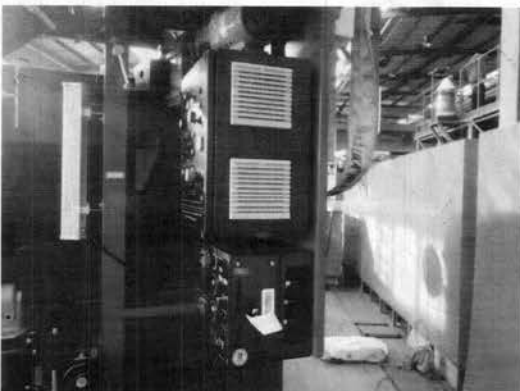
Product mark(D1512180-02)



Control box/NA-3N Control



Control box (Inner)



Westermans International Ltd

Unit 4, Midland Distribution Centre, Markfield Road, Groby, Leicester LE6 0FS, UK

[www.westermans.com](http://www.westermans.com)

[welding@westermans.com](mailto:welding@westermans.com)

T:+44(0) 1162 696941





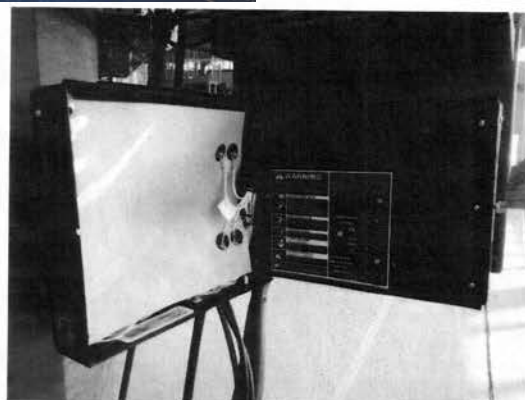
Westermans International Ltd  
together we weld the world...

# INSPECTION REPORT

QR8.2.3-06-408 Ver A



NA-3N Control



NA-3N Control (Inner)



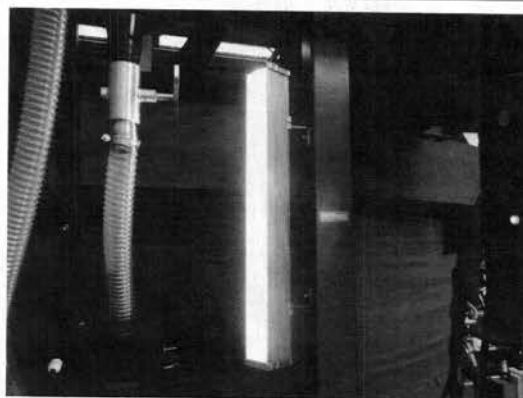
Product mark(D1512180-01)



Product mark(D1512180-02)



Wire reel



LED light

Westermans International Ltd

Unit 4, Midland Distribution Centre, Markfield Road, Groby, Leicester LE6 0FS, UK

[www.westermans.com](http://www.westermans.com)

[welding@westermans.com](mailto:welding@westermans.com)

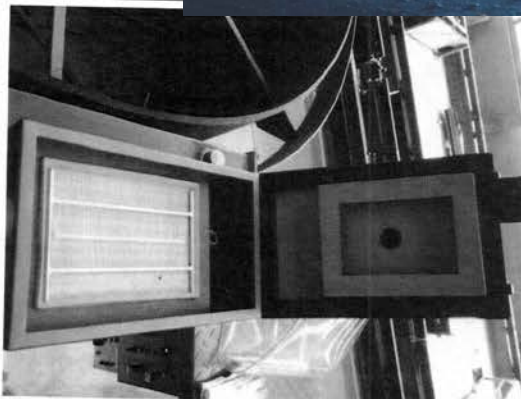
T:+44(0) 1162 696941



Westermans International Ltd  
together we weld the world...

# INSPECTION REPORT

QR8.2.3-06-408 Ver A



Filter



Flux hopper



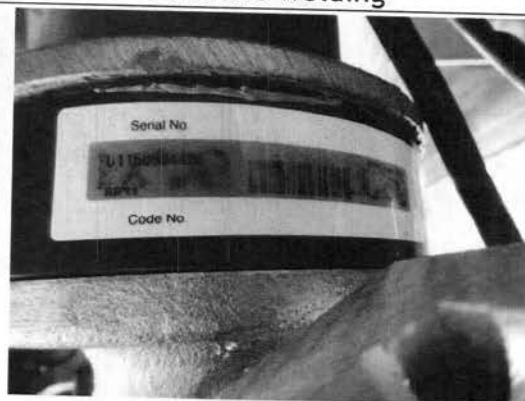
Electromagnetic valve



Adjustable drive wheels for inside/  
outside welding



Torch, manual slide & head  
assembly/Lincoln NA3 head



Product mark(D1512180-01)

Westermans International Ltd

Unit 4, Midland Distribution Centre, Markfield Road, Groby, Leicester LE6 0FS, UK

[www.westermans.com](http://www.westermans.com)

[welding@westermans.com](mailto:welding@westermans.com)

T:+44(0) 1162 696941

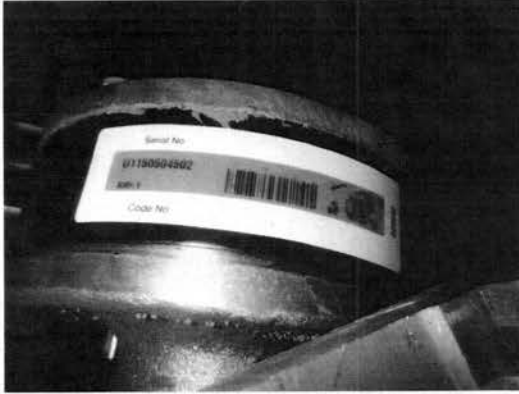




Westermans International Ltd  
together we weld the world...

# INSPECTION REPORT

QR8.2,3-06-408 Ver A



Product mark(D1512180-02)



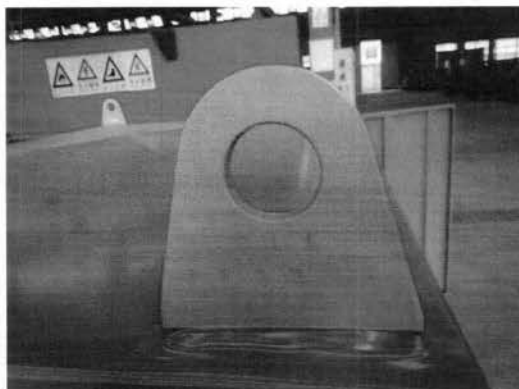
Warning mark



Socket



Plug



Lug



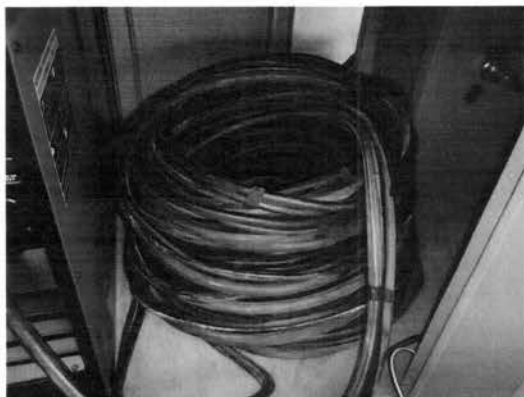
Clutch



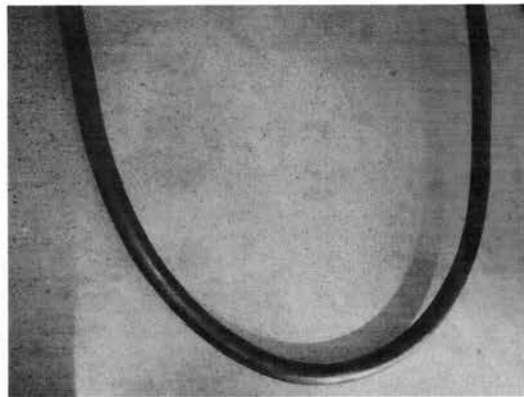
Westermans International Ltd  
together we weld the world...

# INSPECTION REPORT

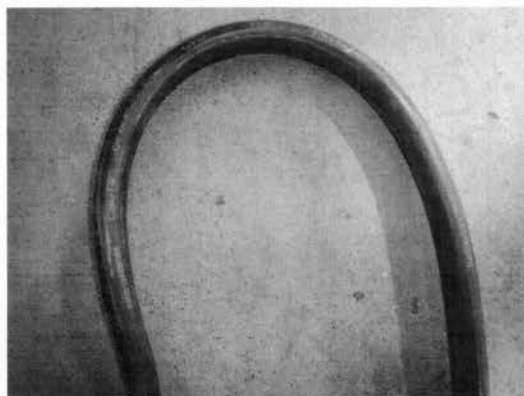
QR8.2.3-06-408 Ver A



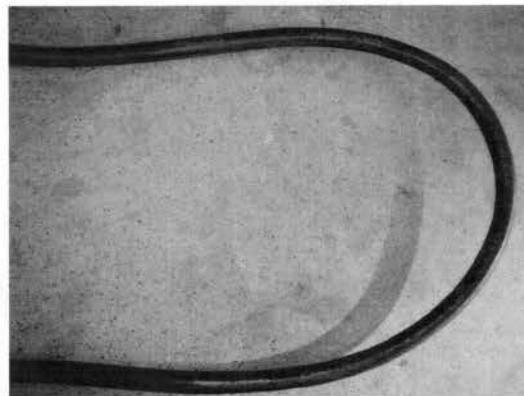
Cable



9\*1.5mm<sup>2</sup>



150mm<sup>2</sup>



3\*4mm<sup>2</sup>



Cable clamp

Westermans International Ltd

Unit 4, Midland Distribution Centre, Markfield Road, Groby, Leicester LE6 0FS, UK

[www.westermans.com](http://www.westermans.com)

[welding@westermans.com](mailto:welding@westermans.com)

T:+44(0) 1162 696941





Westermans International Ltd  
together we weld the world...

# INSPECTION REPORT

QR8.2.3-06-408 Ver A

## 3. Artworks / Labels

Expected Result	Result	Actual Finding / Comments
see attached file	OK	Please refer to the pictures as below

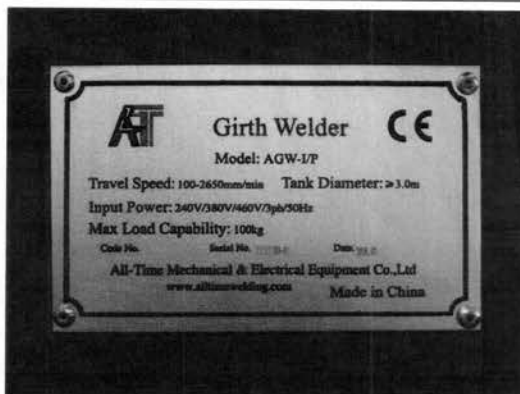
### Pictures:



Logo



Logo



Name plate(D1512180-01)



Name plate(D1512180-01)



Westermans International Ltd  
together we weld the world...

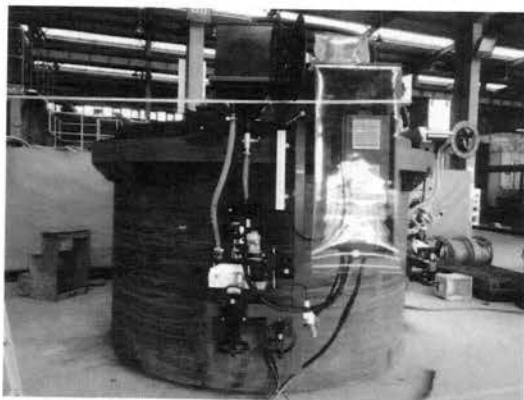
# INSPECTION REPORT

QR8.2.3-06-408 Ver A

## TESTS AND SPECIAL REQUIREMENTS

Test description	Comments from Inspector	Result
Visual check for painting. -The raw material must no be visible all sides must be covered by painting equally. The painting must be uniform.	On all pcs samples check	Passed

### Pictures:



Assembly test according to actual instruction manual & spec. if available-The product can be well assembled and no loosen part or component permit after assembly

On all pcs samples check

Passed

### Pictures:



Internal check No foreign object, loosen part, free movable part permit, the wire inside should be well placed

On all pcs samples check

Passed

Westermans International Ltd

Unit 4, Midland Distribution Centre, Markfield Road, Groby, Leicester LE6 0FS, UK

www.westermans.com

welding@westermans.com

T:+44(0) 1162 696941

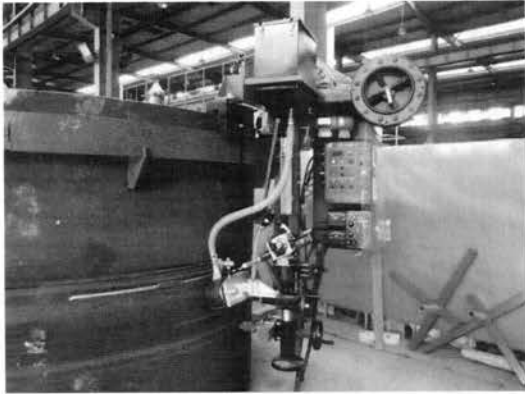





Westermans International Ltd  
together we weld the world...

# INSPECTION REPORT

QR8.2.3-06-408 Ver A

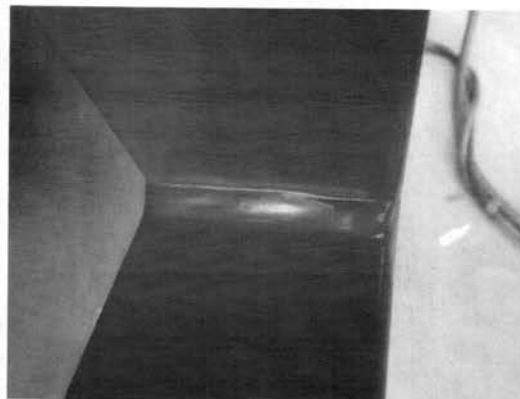
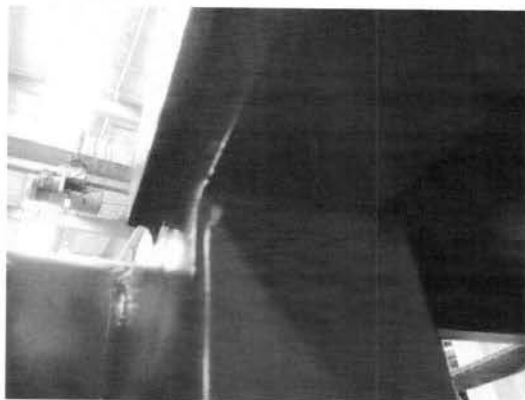
<b>Pictures:</b>		
		
<p>Visual inspection on finishing and appearance.-No damage, deformation, sharp point, sharp edge, foreign materials, rust mark, burrs, painting residuals, scratches or cracks, painting peeling off, poor printing, poor welding finishing, no apparent welding.</p>	On all pcs samples check	Passed
<b>Pictures:</b>		
		
<p>Visual check for welding.-Welding points must be properly finished.</p>	On all pcs samples check	Passed
<b>Pictures:</b>		



Westermans International Ltd  
together we weld the world...

# INSPECTION REPORT

QR8.2.3-06-408 Ver A



Verify the name & quantity for Accessory & component according to actual instruction manual & client's spec.-The accessory/ component should be same as the one list in client's spec. No missing part permit.

Please refer to the style section as upside

Passed

Visual check for marking. Take the picture and note the whole marking information on product & critical component in the report.- All the component with correct marking( brand name, model, etc) should be verify and note in the report.

On all pcs samples check

Passed

## Pictures:



Westermans International Ltd

Unit 4, Midland Distribution Centre, Markfield Road, Groby, Leicester LE6 0FS, UK

www.westermans.com

welding@westermans.com

T:+44(0) 1162 696941





Westermans International Ltd  
together we weld the world...

# INSPECTION REPORT

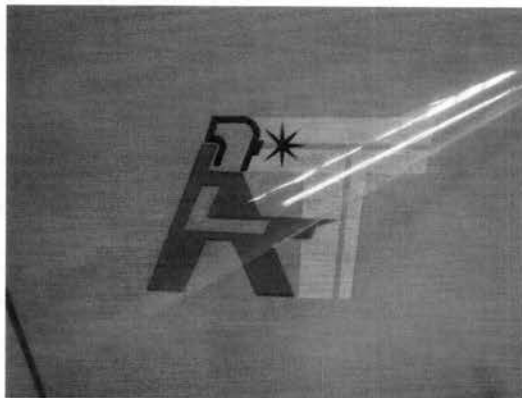
QR8.2.3-06-408 Ver A

Rub test for marking, printing, label on product-Rub test for marking. Wipe marking 15sec with cotton cloth soaked with water. The marking should be readable after test and the label will not peel off around the corner.

By tape check

Passed

## Pictures:



Noise test for environment & during running endurance test. if available-Note noise test result of environment and actual noise test result for product under this environment in the report.

On all pcs samples check

Passed

## Pictures:



Westermans International Ltd

Unit 4, Midland Distribution Centre, Markfield Road, Groby, Leicester LE6 0FS, UK

www.westermans.com

welding@westermans.com

T:+44(0) 1162 696941



Westermans International Ltd  
together we weld the world...

## INSPECTION REPORT

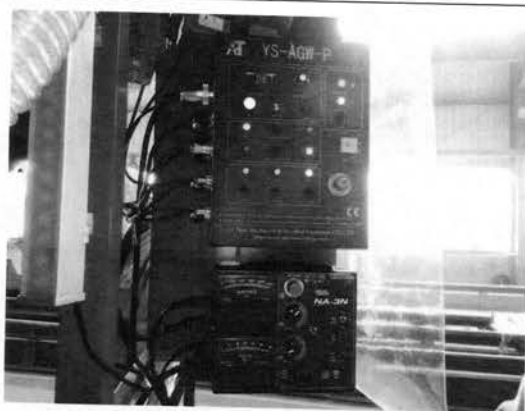
QR8.2.3-06-408 Ver A

Function test according to instruction manual and spec.-All function test shown in the instruction manual & spec need to be test and verified. Check also accessory on assembled product is at good working condition during this test. No stuck/block, abnormal noise, abnormal smell/smoke during test. No breakdown permit for component.

On all pcs samples check

Passed

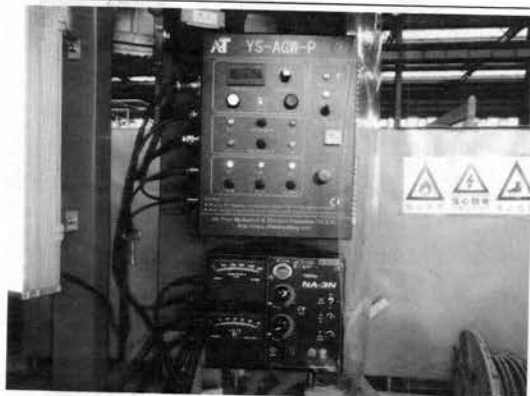
### Pictures:



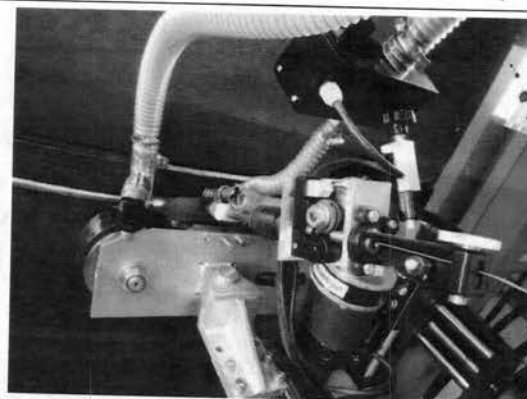
Actual welding  
electricity/voltage(D1512180-01)



Actual weld testing



Actual welding  
electricity/voltage(D1512180-02)



Actual weld testing

Westermans International Ltd

Unit 4, Midland Distribution Centre, Markfield Road, Groby, Leicester LE6 0FS, UK

[www.westermans.com](http://www.westermans.com)

[welding@westermans.com](mailto:welding@westermans.com)

T:+44(0) 1162 696941