

Air Plasma

LPH 35, LPH 50, LPH 80, LPH 120



LPH 35



The LPH 35 is designed for cutting of plates up to 8 mm thick. On the front panel a cutting current of 20A or 35A can be selected, in order to match the power requirements to the cutting conditions. The LPH 35 is equipped with an air cooled torch, the PT 30KK, with 4.0 m hose package.

LPH 50



The LPH 50 is designed for cutting of plates up to 12 mm thick. On the front panel a cutting current of 30A or 50A can be selected, in order to match the power requirements to the cutting conditions. The LPH 50 is equipped with an air cooled torch, the PT 27, with 7.6 m hose package.

LPH 80



The LPH 80 is designed for cutting of plates up to 25 mm thick. On the front panel the cutting current can be set in three steps of 40A, 60A or 80A in order to match the power requirements to the cutting conditions. The LPH 80 is equipped with an air cooled torch, the PT 27, with 7.6 m hose package.

LPH 120



The LPH 120 is designed for cutting of plates up to 35 mm thick. On the front panel the cutting current can be set in three steps of 60A, 90A or 120A in order to match the power requirements to the cutting conditions. The LPH 120 is equipped with an air cooled torch, the PT 25, with 7.6 m hose package.

Technical data:		LPH 35	LPH 50	LPH 80	LPH 120
Mains supply	V / Hz	400 / 50	400 / 50	400 / 50	400 / 50
Fuse, slow	A	16	25	32	50
Rated power	kVA	11	16.5	20	30
Max output					
at 35% duty cycle	A	35	50	80	120
at 100% duty cycle	A	20	30	60	90
at 100% duty cycle	A	-	-	40	60
Open circuit voltage	V	295	320	310	310
Pressure	bar	3.5 - 7.0	4.5 - 7.0	4.5 - 7.0	4.9 - 7.0
Air supply	l / min	130	118	118	186 - 236
Cooling air	l / min	-	-	-	132 - 170
Cutting capacity, Fe	mm	8/12*	12/15*	25/35*	35/45*
Enclosure class	-	IP23	IP23	IP23	IP23
Weight	kg	52	89	131	167
Dimensions l x w x h	mm	610 x 255 x 515	680 x 325 x 715	760 x 390 x 845	760 x 390 x 845

* quality cut/severing

Delivery content

LPH 35

PT 30KK plasma cutting torch with 4 m hose, 3 m mains cable and 4.5 m return cable with clamp.

LPH 50

PT 27 plasma cutting torch with 7.6 m hose, 3 m mains cable and 6 m return cable with clamp.

LPH 80

PT 27 plasma cutting torch with 7.6 m hose, 3 m mains cable and 6 m return cable with clamp.

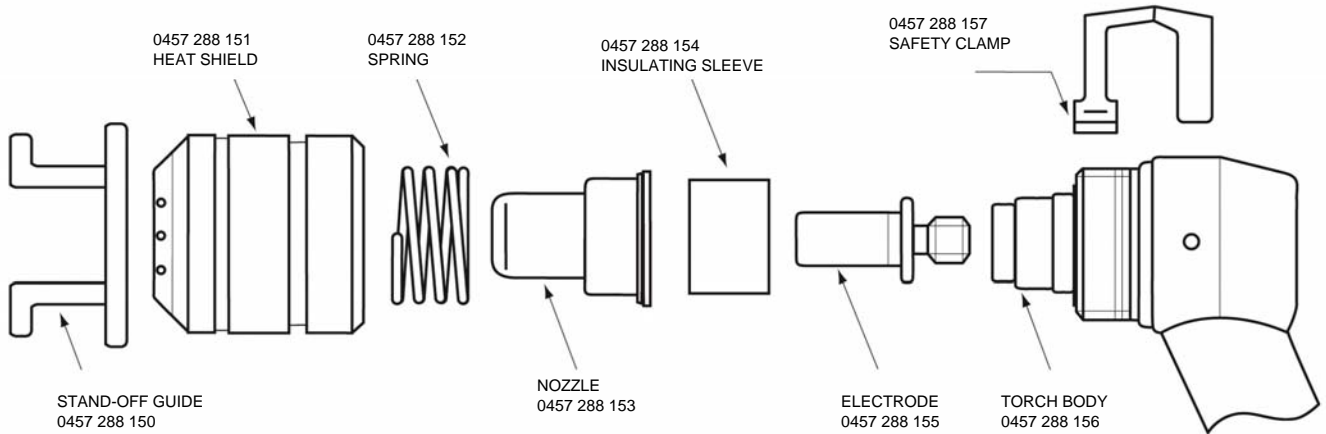
LPH 120

PT 25 plasma cutting torch with 7.6 m hose, 3 m mains cable and 6 m return cable with clamp.

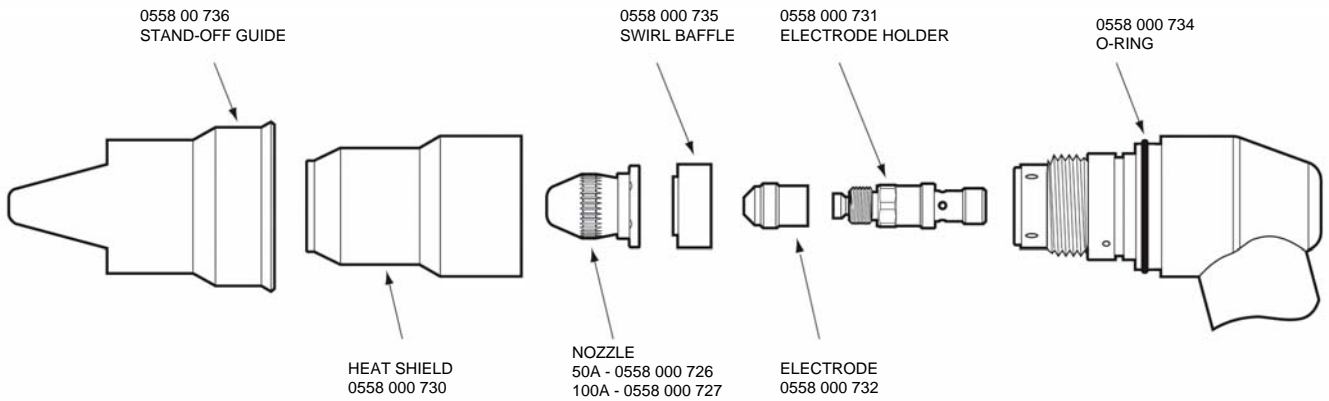
Ordering information

LPH 35	0457 288 880
LPH 50	0457 289 880
LPH 80	0457 290 880
LPH 120	0457 291 880
PT 25	0558 000 724
PT 27	0558 000 487
PT 30KK	0457 288 001

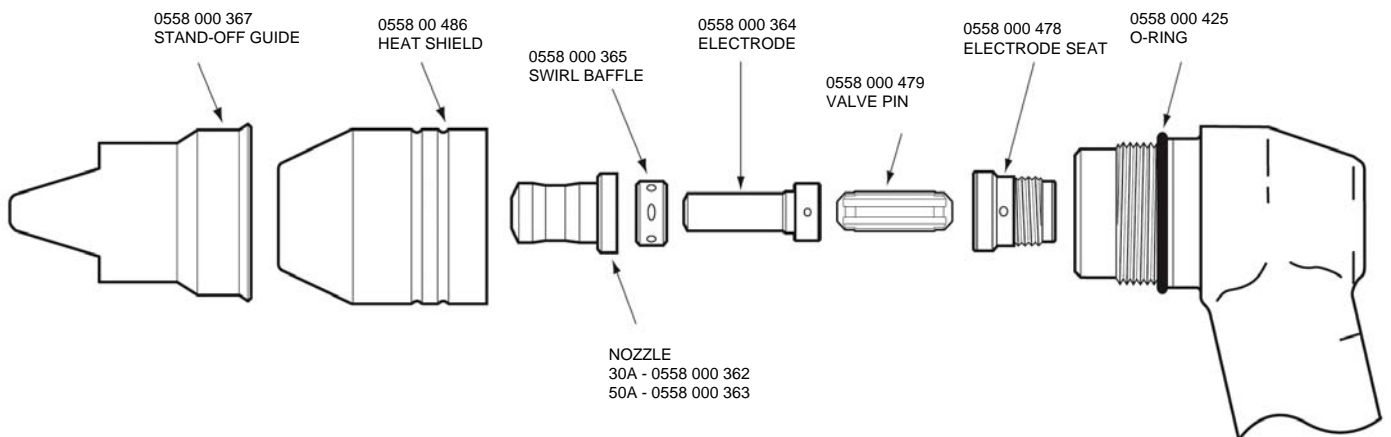
TORCH PT 30KK



TORCH PT 25



TORCH PT 27



ESAB reserves the right to change applications without notice.

Approved according to the ISO 9000 system.



ESAB AB
 Herkulesgatan 72
 Box 8004
 S-402 77 GÖTEBORG, Sweden
 Tel:+46 31 50 90 00
 Fax:+46 31 50 93 90
 e-post: info@esab.se
www.esab.com