

## Pipe Profiling Pipe Cutting Machine Model - Pipemaster

**This range of pipe profiling machinery provides most of the requirements for cutting of pipe where their branches are of welded construction. Cutting with either Gas or Plasma.**

The three basic functions are

- To produce accurate 90° saddles "set in" or "set on", with our without variable bevel angle change.
- To produce accurate mitre cuts, or complete mitre segments, usually without disturbing the pipe in the machine, with or without variable bevel angle change.
- To cut pipe ends or cut pipes to length with or without bevel. Little or no grinding is necessary.

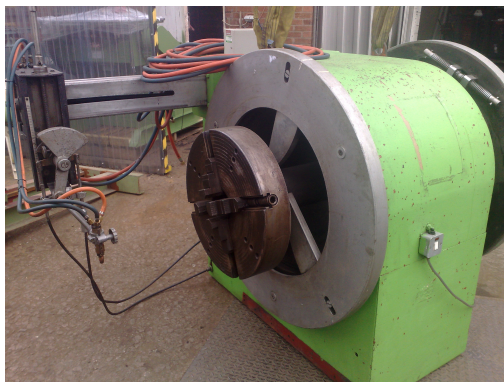
**Stock No:** 12011

**Product Name:** PPE 900mm (36 inch) Pipe Profile Cutting Machine or Welding

**Description:** Suitable for pipe fabricators who wish to cut 90 degree saddles and mitres onto pipes up to 600mm diameter with varying pipe wall thicknesses with weld preparations if required

Example photograph

**Link to Photographs:** [12011](#)



**Stock No:** 11922

**Product Name:** PPE 600mm (24") Pipe Profile Cutting or Welding Machine

**Description:** For pipes up to 600mm diameter with varying pipe wall thicknesses

**Link to further photographs:** [11922](#)

Optional Extra – Pipe Idlers

**Stock No:** 11963

**Product Name:** PPE 350mm (14") Pipe Profile Cutting or Welding Machine

**Description:** For pipes up to 350mm diameter with varying pipe wall thicknesses

**Link to further photographs:** [11963](#)

Optional Extra – Pipe Idlers



Parts and Labour Warranty: Ran & Tested 4 months, Refurbished 6 months. Export warranty is Parts only.

All prices are quote GB Sterling and exclusive of VAT. Prices quoted Ex-Works, Leicester UK Both machines can be viewed at our [Syston](#) warehouse, follow link for directions. Appointments are advisable.

**Unit 2 Brook Street, Syston, Leicester LE7 1GD UK | Tel +44 (0)116 2696941 Fax +44 (0)116 2696942  
Email [welding@westermans.com](mailto:welding@westermans.com) | Web [www.westermans.com](http://www.westermans.com)**